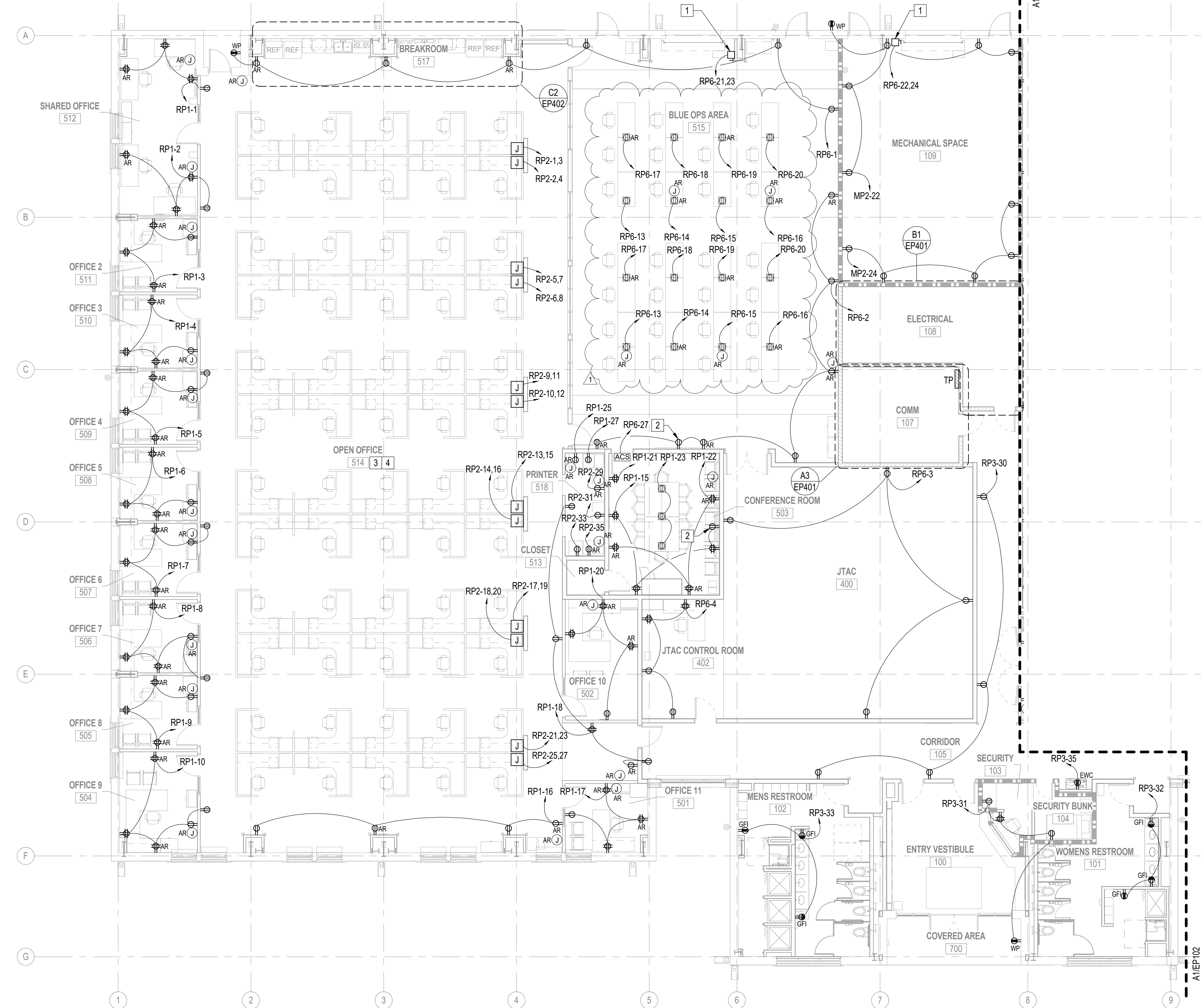


C:\w\2018\10\1385\1-E-CENTRAL_P-395 MARINE HQ_jeremy.donest.v1
08/2/2018 14:17 PM



A1 FIRST FLOOR PLAN - POWER - AREA A
1/8" = 1'-0"



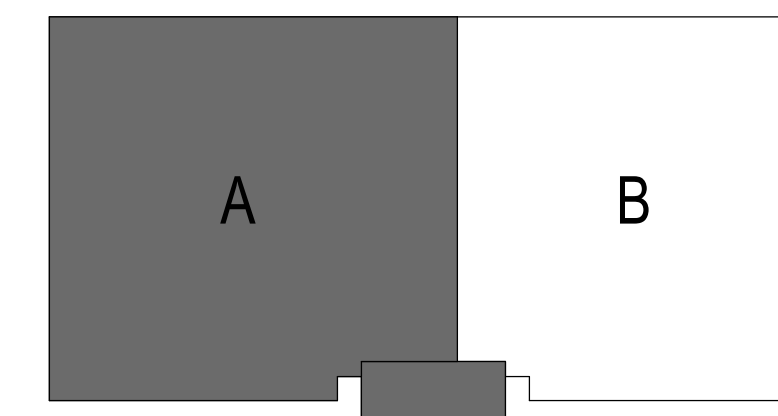
GENERAL NOTES

1. REFER TO PANEL SCHEDULES FOR CONDUIT AND WIRE SIZES.
2. REFER TO AUXILIARY SYSTEMS PLAN, EY101, FOR ADDITIONAL ACCESS CONTROL SYSTEM DETAILS.
3. RECEPTACLES WITH SUBSCRIPT "AR" MUST HAVE A "CONTROLLED" MARKING THAT COMPLY WITH NEC ARTICLE 406.3(E) "CONTROLLED RECEPTACLE MARKING".
4. TYPICAL - AUTOMATIC RECEPTACLE CONTROL REPLAY MODULE TO BE CONNECTED TO THE NEAREST OCCUPANCY SENSOR WITHIN THE ROOM/AREA IT RESIDES. WHEN THE ROOM/AREA IS VACANT, OCCUPANCY SENSOR WILL BE RESPONSIBLE FOR AUTOMATICALLY TURNING OFF THE RECEPTACLES WITH SUBSCRIPT "AR".
5. FIELD ADJUST CONVENIENCE RECEPTACLES SHOWN SO THAT AT LEAST ONE RECEPTACLE IS NO MORE THAN 2-3 FT FROM THE DEFIBRILLATOR WITHIN ITS RESPECTIVE ROOM.
6. PROVIDE 6" LINEAR SEPARATION BETWEEN POWER AND DATA NETWORK CABLES.
7. FOR FURNITURE CONNECTIONS, NO MORE THAN THREE CUBICLES ARE TO BE CONNECTED TO A CIRCUIT.

POWER KEYNOTES

- 1 30A DISCONNECT SWITCH FOR OVERHEAD DOOR.
- 2 RECEPTACLE FOR TIME ZONE CLOCK. COORDINATE MOUNTING HEIGHT WITH CLOCK LOCATION SUCH THAT RECEPTACLE IS HIDDEN BEHIND CLOCK.
- 3 FOR THE OPEN OFFICE AREA - CONNECT EACH OF THE FOLLOWING CIRCUITS TO AN AUTOMATIC RECEPTACLE CONTROL REPLAY MODULE THAT MEETS THE AUTOMATIC RECEPTACLE REQUIREMENT OF ASHRAE 90.1:
* RP2-3, RP2-4, RP2-7, RP2-8, RP2-11, RP2-12, RP2-15, RP2-16, RP2-19, RP2-20, RP2-23 AND RP2-27
EACH RECEPTACLE CONTROLLER MUST BE CAPABLE OF COMMUNICATING WITH THE OCCUPANCY SENSOR, WITHIN ITS RESPECTIVE AREA, THRU WIRELESS TECHNOLOGY.
- 4 FOR OPEN OFFICE AREA - CONTRACTOR TO WIRE 50% OF THE RECEPTACLES IN EACH MODULAR FURNITURE SYSTEM TO AN AUTOMATIC CONTROL RECEPTACLES CIRCUIT TO ENSURE AREA IS IN COMPLIANCE WITH THE AUTOMATIC RECEPTACLE REQUIREMENT OF ASHRAE 90.1.

KEY PLAN



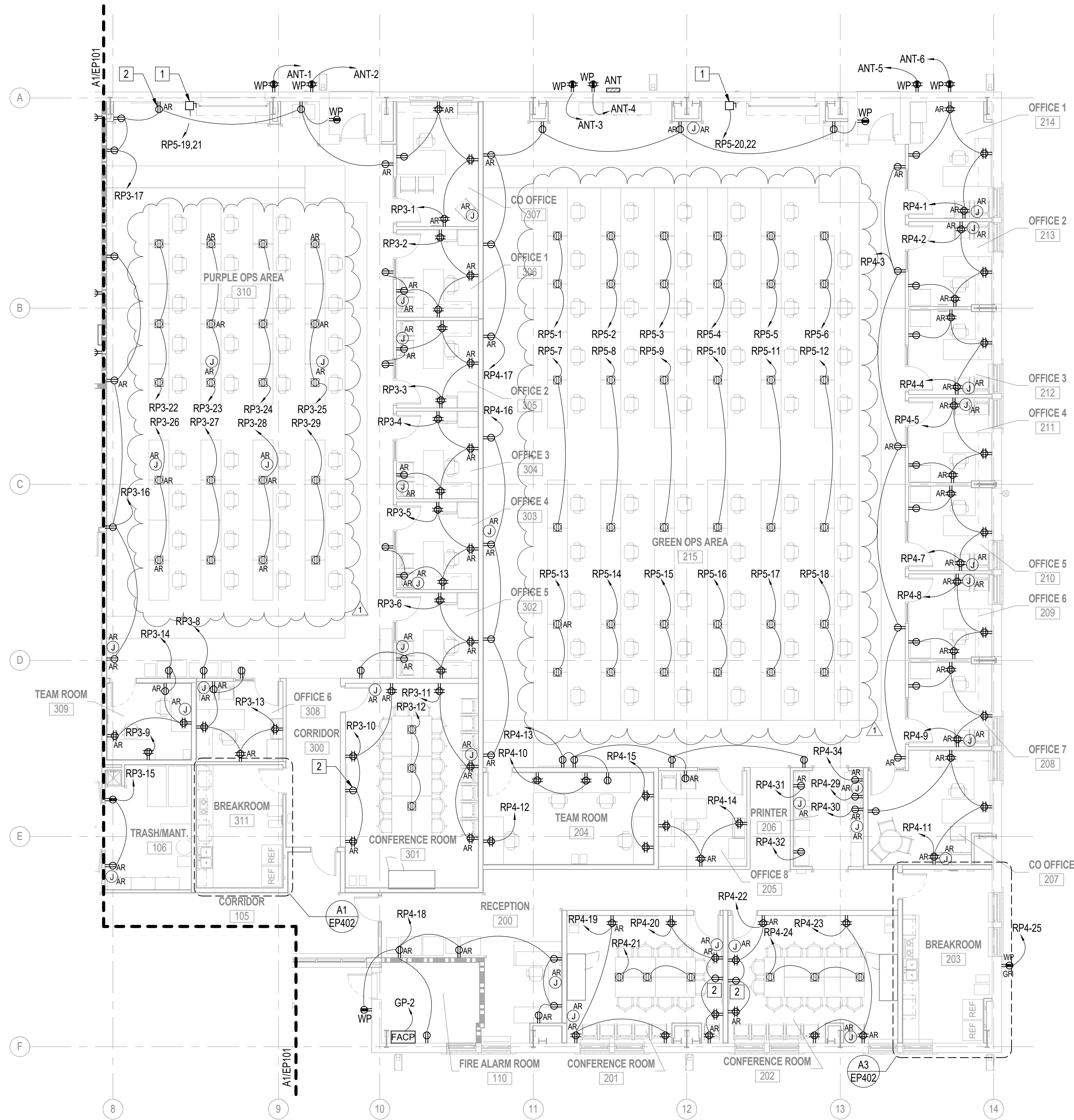
APPROVED	DATE	08/05/2020	APPR
FOR COMMANDER NAVFAC	REVISION 1	DESCRIPTION	SYM
ACTIVITY	1	1	
Approved by Emily Sylvester, Director of Installation Development Division			
SATISFACTORY TO DATE	06/19/2020		
DES	EC	DRW	DJP
CHK	EC		
PM/DM	SGL/RMS		
BRANCH MANAGER	JAS		
CHIEF ENGINEER	EJA		
FIRE PROTECTION			
DEPARTMENT OF THE NAVY	NAVAL FACILITIES ENGINEERING COMMAND	MID-ATLANTIC	
MILITANT CI CORE	CAMP LEJEUNE - JACKSONVILLE, NC		
MARSEC	JACKSONVILLE - NORTH CAROLINA		
P1395 MARINE RAIDER HEADQUARTERS			
FIRST FLOOR PLAN - POWER - AREA A			
SCALE: AS NOTED			
PROJECT NO.:	1603164		
CONSTR. CONTR. NO.			
NAVFAC DRAWING NO.	12794402		
SHEET	183	OF	228
EP101			
DRAWING REVISION: 17 APRIL 2018			

C:\w\2018\11\13\1381-E-CENTRAL_P-395 MARINE HQ_jeremy.forest.v1
08/2020 14:13:21 PM

A1

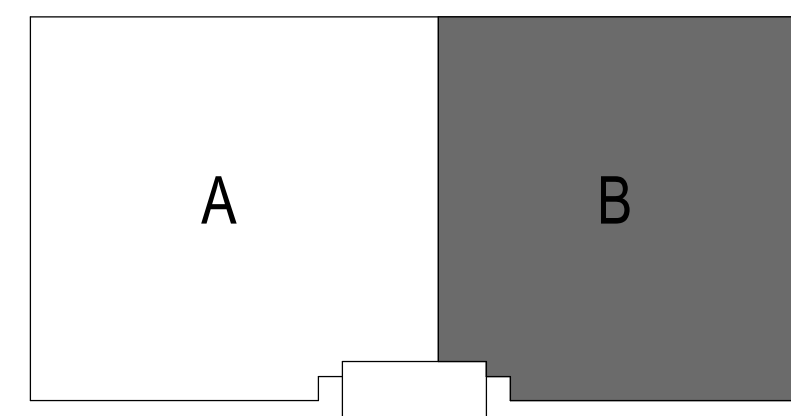
FIRST FLOOR PLAN - POWER - AREA B

1/8" = 1'-0"



0 4' 8' 16'

KEY PLAN



PLAN
NORTH

GENERAL NOTES

1. REFER TO PANEL SCHEDULES FOR CONDUIT AND WIRE SIZES.
2. REFER TO AUXILIARY SYSTEMS PLAN, EY101, FOR ADDITIONAL ACCESS CONTROL SYSTEM DETAILS.
3. RECEPTACLES WITH SUBSCRIPT "AR" MUST HAVE A "CONTROLLED" MARKING THAT COMPLY WITH NEC ARTICLE 406.3(E) "CONTROLLED RECEPTACLE MARKING".
4. TYPICAL - AUTOMATIC RECEPTACLE CONTROL REPLAY MODULE TO BE CONNECTED TO THE NEAREST OCCUPANCY SENSOR WITHIN THE ROOM/AREA IT RESIDES. WHEN THE ROOM/AREA IS VACANT, OCCUPANCY SENSOR WILL BE RESPONSIBLE FOR AUTOMATICALLY TURNING OFF THE RECEPTACLES WITH SUBSCRIPT "AR".
5. FIELD ADJUST CONVENIENCE RECEPTACLES SHOWN SO THAT AT LEAST ONE RECEPTACLE IS NO MORE THAN 2-3 FT FROM THE DEFIBRILLATOR WITHIN ITS RESPECTIVE ROOM.

POWER KEYNOTES

- 1 30A DISCONNECT SWITCH FOR OVERHEAD DOOR.
- 2 RECEPTACLE FOR TIME ZONE CLOCK. COORDINATE MOUNTING HEIGHT WITH CLOCK LOCATION SUCH THAT RECEPTACLE IS HIDDEN BEHIND CLOCK.



APPROVED

FOR COMMANDER NAVFAC

ACTIVITY

Approved by Emily Sylvester, Director of

Installation Development Division

SATISFACTORY TO DATE 06/19/2020

DES EC DRW DJF CHK EC

PHDMM SGL/RMS

BRANCH MANAGER JAS

CHIEF ENGINEER EJA

FIRE PROTECTION

NAVAL FACILITIES ENGINEERING COMMAND

NAVAL FACILITIES ENGINEERING COMMAND ~ MID-ATLANTIC

CAMP LEJUNE - JACKSONVILLE, NC

MARSOC

P1395 MARINE RAIDER HEADQUARTERS

JACKSONVILLE, NORTH CAROLINA

FIRST FLOOR PLAN - POWER - AREA B

SCALE: AS NOTED

PROJECT NO.: 1603164

CONSTR. CONTR. NO.

NAVFAC DRAWING NO.

12794403

SHEET 184 OF 228

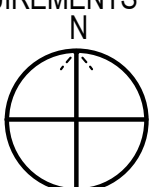
EP102

DRAWING REVISION: 17 APRIL 2018

C:\w\2016\1313681-E-CENTRAL_P-1365 MARINE HQ_Jeremy.forest.vt
06/20/2016 14:13:57 PM

A1 SITE PLAN - ELECTRICAL
1" = 50'-0"

0 50 100



GENERAL NOTES

1. FIELD VERIFY NEMA 4X NOTE THAT EACH ENCLOSURE REQUIRE AN 'END USER'S EQUIPMENT CABLING PENETRATION TO BE COORDINATED BETWEEN USMC AND THE ELECTRICAL CONTRACTOR BEFORE FINAL INSTALLATION. COORDINATE ENCLOSURE LOCATIONS WITH OWNER PRIOR TO INSTALLATION.
2. NEMA 4X TELECOMMUNICATION ENCLOSURES TO BE MOUNTED AT 48" AFG.
3. COORDINATE ALL UNDERGROUND STRUCTURES AND UTILITIES PRIOR TO BEGINNING WORK.
4. COMMUNICATION CONDUIT BENDS SHALL BE SWEEPS WITH A MINIMUM RADIUS OF TEN TIMES THE INTERNAL DIAMETER.
5. NO SECTION OF COMMUNICATION CONDUIT SHALL CONTAIN NO MORE THAN TWO 90 DEGREE BENDS OR EQUIVALENT BETWEEN PULL POINTS
6. INSTALL MAINTENANCE HOLES WHERE CONDUIT SECTION LENGTH EXCEEDS 400FT.
7. DUCTS TO BE SEALED TO RESIST LIQUID AND GAS INFILTRATION AT BOTH ENDS AND CLEARLY MARKED ON OUTSIDE END.
8. UNDERGROUND CONDUITS TO BE INSTALLED SO THAT A SLOPE EXIST AT ALL POINTS OF THE RUN TO ALLOW DRAINAGE AND PREVENT ACCUMULATION OF WATER. SLOPE SLEEVES DOWNWARD 0.125IN/FT AWAY FROM BUILDING.
9. UPON ENTERING THE BUILDING TERMINATE ALL OSP COPPER CABLES ON THE PROTECTED ENTRANCE TERMINAL (PET).
10. ALL COPPER AND FIBER TELECOMMUNICATION CABLES SHOWN ON THIS SHEET ARE TO BE OSP RATED.
11. PROVIDE A MINIMUM COMMUNICATION HANDHOLE SIZE OF 4'x4'x4', AND COMMUNICATION MAINTENANCE HOLE SIZE OF 6'x7'x8'. PROVIDE HANDHOLES WITH ROUND LIDS AND OPEN BOTTOM.
12. UNDERGROUND PORTION SHALL BE ENCASED IN MINIMUM OF 3" OF CONCRETE EXTENDING FROM THE BUILDING ENTRANCE TO OSP DEMARCATION POINT.

ELECTRICAL KEYNOTES

1. ROUTE FOUR 4" CONDUITS BELOW GRADE FROM COMM ROOM TO EXISTING UTILITY MANHOLE AT EVERETTE CREEK RD. FOR CONNECTION DEMARK. INSTALL TWO 3-CELL FABRIC INNER DUCTS IN EACH CONDUIT THAT CONTAIN FIBER CABLES. INSTALL A PULL WIRE INSIDE EACH OF THE INNERDUCTS. REFER TO COMMUNICATIONS RISER DIAGRAM FOR ADDITIONAL INFORMATION. ROUTE ONE SET OF 48 STRANDS OF SINGLEMODE FIBER OPTIC CABLE IN ONE CONDUIT, AND 100 PAIR OF COPPER CABLES IN ANOTHER CONDUIT.
2. ROUTE ONE SET OF 36 STRANDS OF SINGLEMODE FIBER OPTIC CABLE, AND 50 PAIR OF COPPER CABLES BELOW GRADE IN 4" CONDUIT FROM COMM ROOM 107 TO NETWORK SWITCH AT ANTENNA PAD. INSTALL TWO 3-CELL FABRIC INNERDUCTS WITHIN THE CONDUIT. INSTALL A PULL WIRE INSIDE EACH OF THE INNERDUCTS. SEE TELECOMMUNICATION RISER DIAGRAM FOR ADDITIONAL INFORMATION.
3. EXCAVATION NEAR BUILDING TO BE PERFORMED WITH HAND TOOLS OR NON-DESTRUCTIVE TOOLS UNTIL THE FACILITY IS EXPOSED, OR MAXIMUM DEPTH OF THE INTENDED EXCAVATION IS REACHED.
4. PROVIDE NEMA 4X CABINET FOR 12 PORT NETWORK SWITCH. CABINET TO BE SUPPLIED WITH AN INTEGRAL HANDLE, FOR PHYSICAL LOCKING CAPABILITY, AND MUST BE KEYED FOR TYPICAL CAMP LEJEUNE USMC APPLICATION COPPER CABLES TO TERMINATE ON KRONE BLOCK AND LIGHTNING PROTECTOR TO PROVIDE DIAL TONE. COPPER CABLES TO BE TERMINATED ON RJ45 PATCH PANEL WITHIN NEMA 4X CABINET. FIBER CABLE TO TERMINATE ON SC TYPE CONNECTORS IN A RACK MOUNTABLE (PCH FDP). NETWORK SWITCH TO BE GOVERNMENT FURNISHED GOVERNMENT INSTALL. REFER TO "EQUIPMENT MOUNTING STRUCTURE" DETAIL ON SHEET EP502.
5. ROUTE EIGHT CATEGORY 6 (CAT6) OUTDOOR RATED WATER BLOCK CABLES IN 1-1/2" CONDUIT BELOW GRADE TO NEMA 4X ENCLOSURE NOTED IN KEYNOTE 6.
6. PROVIDE NEMA 4X CABINET FOR TERMINATION OF CAT6 CABLES. CABINET TO BE SUPPLIED WITH AN INTEGRAL HANDLE, FOR PHYSICAL LOCKING CAPABILITY, AND MUST BE KEYED FOR TYPICAL CAMP LEJEUNE USMC APPLICATION CABLES TO BE TERMINATED PER BASE TELECOMMUNICATIONS STANDARDS. CABINETS MUST HAVE WEATHERPROOF "WHILE-IN-USE" PATHWAYS FOR USER CABLING SO CABLING CAN FEED GOVERNMENT EQUIPMENT WITH CABINET CLOSED. REFER TO "EQUIPMENT MOUNTING STRUCTURE" DETAIL ON SHEET EP502.
7. LOCATE NOTED TELECOMMUNICATION HANDHOLE A MINIMUM OF 6' FROM BUILDING ENTRANCE.
8. SITE LUMINAIRES NOT APART OF THE BASE BID PACKAGE. ONLY CIRCUIT, FEEDERS, AND CONDUIT TO BE STUBBED UP UNDER BASE BID PACKAGE TO EDGE OF ACCESS ROADWAY.
9. 15KV, 200A, 2-WAY ALUMINUM SECTIONALIZING CABINET.
10. ROUTE TWO DEDICATED 20A, 1-POLE CIRCUITS BELOW GRADE TO EACH CABINET FROM PANEL 'ANT'. ROUTE CONDUIT PARALLEL TO 1-1/2" COMM CONDUIT REFERENCE IN KEYNOTE #6. REFER TO PANELBOARD SCHEDULE 'ANT' FOR CIRCUIT NUMBER, WIRE, AND CONDUIT INFORMATION.
11. FOR GATE OPERATOR - PROVIDE TWO 1" CONDUIT STUB-UPS (1-POWER/1-COMM) ADJACENT TO GATE OPERATOR LOCATION. ROUTE BELOW GRADE TO GATE OPERATOR SYSTEM AND ELECTRICAL PANEL LOCATED IN ELECTRICAL ROOM 108. COORDINATE ADDITIONAL WIRING REQUIREMENTS WITH GATE OPERATOR SUPPLIER.
12. FOR CARD READER/INTERCOM NEAR VEHICLE ACCESS GATE - PROVIDE TWO 1" CONDUIT STUB-UPS (1-POWER/1-COMM) UNDER STANCHION LOCATION. ROUTE BELOW GRADE TO ACCESS CONTROL SYSTEM, AND ELECTRICAL PANEL, LOCATED IN COMM ROOM 107. COORDINATE ADDITIONAL WIRING REQUIREMENTS WITH EQUIPMENT SUPPLIER.
13. FOR CARD READER/INTERCOM NEAR MAIN ACCESS GATE - PROVIDE TWO 1" CONDUIT STUB-UPS (1-POWER/1-COMM) NEAR MAIN GATE LOCATION. ROUTE BELOW GRADE TO ACCESS CONTROL SYSTEM, AND ELECTRICAL PANEL, LOCATED IN COMM ROOM 107. COORDINATE ADDITIONAL WIRING REQUIREMENTS WITH EQUIPMENT SUPPLIER.
14. PROVIDE WEATHERPROOF "WHILE IN USE" GFI NEMA 120V, 20A DEDICATED RECEPTACLES MOUNTED ON BOTTOM OF STEEL STRUCTURE AS IDENTIFIED IN KEYNOTE 10. REFER TO "EQUIPMENT MOUNTING STRUCTURE" DETAIL ON SHEET EP502.
15. FEEDER AND CONDUIT TO BE ROUTED TO DISTRIBUTION PANELBOARD 'DP', IN ELECTRICAL ROOM. REFER TO POWER RISER DIAGRAM FOR ADDITIONAL INFORMATION.
16. FOR CARD READER/INTERCOM - PROVIDE 2" CONDUIT STUB-UP UNDER STANCHION LOCATION. ROUTE BELOW GRADE TO INTERCOM AND ACCESS CONTROL SYSTEM LOCATED IN COMM ROOM 107. COORDINATE ADDITIONAL WIRING REQUIREMENTS WITH STANCHION SUPPLIER.
17. FOR GATE OPERATOR, PROVIDE TWO 1" CONDUIT STUB UPS (1-POWER/1-COMMS) ADJACENT TO GATE OPERATOR LOCATION. ROUTE BELOW GRADE TO OPERATOR SYSTEM, AND TO CIRCUIT SHOWN, LOCATED IN ELECTRICAL ROOM 108. COORDINATE ADDITIONAL WIRING REQUIREMENTS WITH GATE OPERATOR SUPPLIER.
18. FOR TURNSTILE, PROVIDE TWO 1" CONDUIT STUB-UPS (1-POWER/1-COMMS) ADJACENT TO TURNSTILE LOCATION. ROUTE BELOW GRADE TO GATE OPERATOR SYSTEM, AND CIRCUIT SHOWN, LOCATED IN ELECTRICAL ROOM 108. COORDINATE ADDITIONAL WIRING REQUIREMENTS WITH TURNSTILE SUPPLIER.



APPROVED				
FOR COMMANDER NAVFAC				
ACTIVITY				
Approved by Emily Sylvester, Director of Installation Development Division				
SATISFACTORY TO DATE 06/19/2020				
DES	EC	DRW	DJF	CHK EC
BRANCH MANAGER		SGL/RMS		
CHIEF ENGINEER		JAS		
FIRE PROTECTION		EJA		

DEPARTMENT OF THE NAVY NAVAL FACILITIES ENGINEERING COMMAND MID-ATLANTIC MID-ATLANTIC MARSOC	NAVAL FACILITIES ENGINEERING COMMAND ~ MID-ATLANTIC CAMP LEJEUNE - JACKSONVILLE, NC	
	JACKSONVILLE, NORTH CAROLINA	
	P1395 MARINE RAIDER HEADQUARTERS	
	SITE PLAN - ELECTRICAL	

SCALE: AS NOTED	
EPROJECT NO.: 1603164	
CONSTR. CONTR. NO.	
NAVFAC DRAWING NO. 12794395	
SHEET 176	OF 228
ES101	
DRAWING REVISION: 17 APRIL 2018	

D

C

B

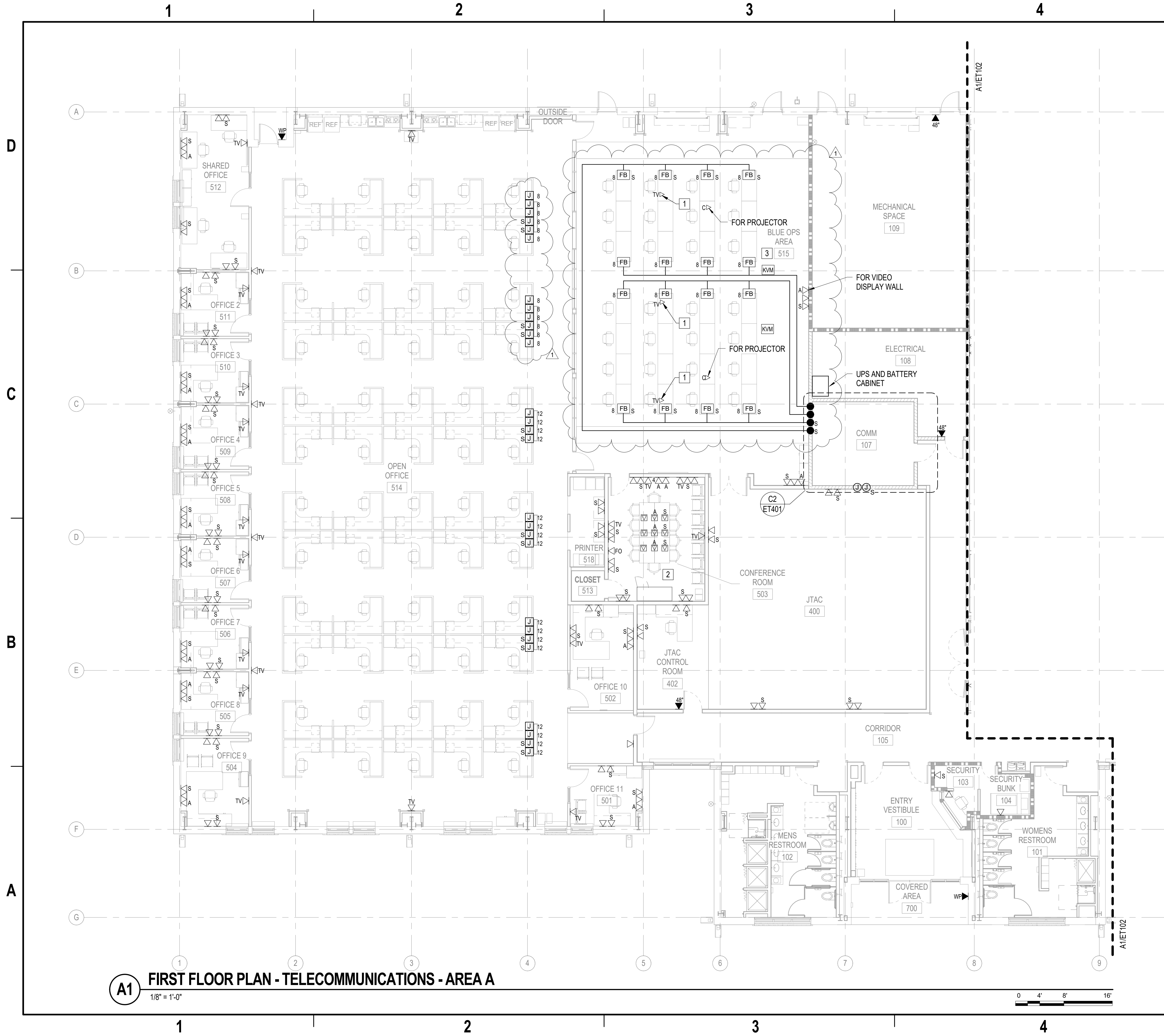
A

UNCLASSIFIED

A

UNCLASSIFIED

C:\w\5016\1013861\1-E-CENTRAL_P - 395 MARINE HQ_jeremy.forest.v1
08/2/2016 14:25:41 PM



A1 FIRST FLOOR PLAN - TELECOMMUNICATIONS - AREA A
1/8" = 1'-0"

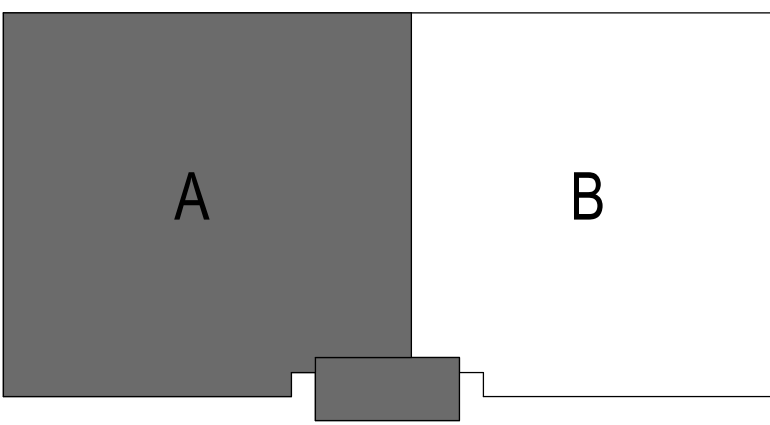
GENERAL NOTES

1. PROVIDE SEPARATION DISTANCE OF 6" BETWEEN SIPRNET AND NIPRNET DEVICE OUTSIDE EDGE OF 5'x5' BOX.
2. PROVIDE MINIMUM SEPARATION DISTANCE OF 6" BETWEEN SIPRNET AND NIPRNET CABLE PATHWAYS AND TERMINATIONS.
3. IN INDIVIDUAL OFFICES, MOUNT TV OUTLETS AT 66" AFF. IN OPEN OFFICES MOUNT TV OUTLETS AT 72" AFF. LOCATE TV OUTLET ADJACENT TO THEIR RESPECTIVE POWER RECEPTACLE.
4. FLOOR BOX TO BE LIMITED TO SERVING A MAXIMUM OF 6 WORK AREAS (ALL PART OF ONE FURNITURE CLUSTER). PROVIDE EACH DESK AREA WITH TWO NIPR AND TWO SIPR DATA OUTLETS.
5. MOUNT DATA OUTLETS ADJACENT TO POWER OUTLETS, WITH A SEPARATION DISTANCE OF 6" BETWEEN THE EDGE OF DATA AND POWER FACEPLATES.
6. IN CONFERENCE ROOMS, FLOOR BOXES TO BE ALIGNED NEAR EDGE OF TABLES AND WITH TABLE LEGS FOR CABLE MANAGEMENT OF POWER, DATA, AND A/V DEVICES.
7. PROVIDE 6" LINEAR SEPARATION BETWEEN POWER AND DATA NETWORK CABLES.
8. PROVIDE 2 PORTS PER SYSTEM FURNITURE AND FLOOR BOXES IN MULTIPLES OF 4. TERMINATE TWO CABLES IN DESK FURNITURE PER CLASSIFIED NETWORK.
9. ENSURE PROPER PATHWAY SEPARATIONS PER TIA-569 CNSSAM TEMPEST REQUIREMENTS.

TELECOMMUNICATIONS KEYNOTES

1. CEILING MOUNTED OUTLET. MOUNT 3-6 INCHES ABOVE THE CEILING.
2. SURFACE MOUNT ALL TELECOMMUNICATIONS DEVICES WITHIN THIS ROOM.
3. CAT6 CABLE ROUTING SHOWN TO AND FROM FLOOR BOXES WITHIN THIS ROOM ARE DIAGRAMMATIC. COORDINATE ACTUALLY ROUTING OF CAT6 CABLING WITHIN FLOOR CABLE PATHWAY SYSTEM IN THE FIELD. REFER TO "WALL TO ACCESS FLOORING TRANSITION" DETAIL FOR ADDITIONAL REQUIREMENTS.

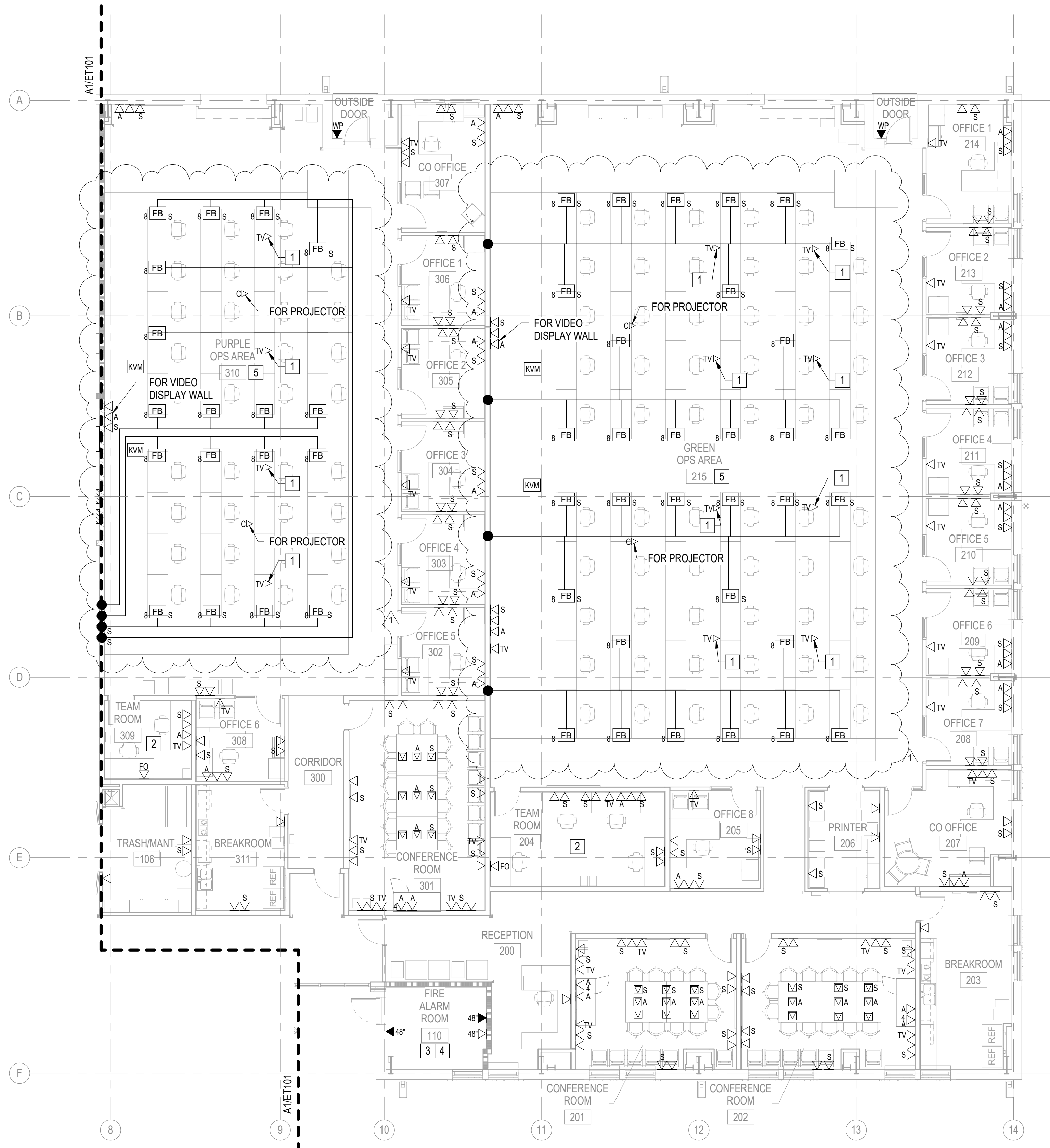
KEY PLAN



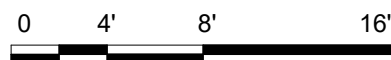
PLAN
NORTH

APPROVED	DATE	08/05/2020	APPR
FOR COMMANDER NAVFAC	REVISION 1	DESCRIPTION	SYM
ACTIVITY	1	DESCRIPTION	SYM
Approved by Emily Sylvester, Director of Installation Development Division			
SATISFACTORY TO DATE	06/19/2020		
DES	EC	DRW	DJF
CHK	JAZ		
PMOM	SGL/RMS		
BRANCH MANAGER	JAS		
CHIEF ENGINEER	EJA		
FIRE PROTECTION			
NAVAL FACILITIES ENGINEERING COMMAND	MID-ATLANTIC	JACKSONVILLE, NORTH CAROLINA	
NAVAL FACILITIES ENGINEERING COMMAND	MID-ATLANTIC	JACKSONVILLE, NORTH CAROLINA	
MARSOC			
DEPARTMENT OF THE NAVY			
NAVAL FACILITIES ENGINEERING COMMAND			
MID-ATLANTIC			
MARSOC			
SCALE: AS NOTED			
PROJECT NO.:	1603164		
CONSTR. CONTR. NO.			
NAVFAC DRAWING NO.	12794420		
SHEET	201	OF	228
ET101			
DRAWING REVISION: 17 APRIL 2018			

C:\w\2018\10\13\2881\2-CENTRAL_P - 365 MARINE HQ_jeremy.forest.v1
09/2020 14:26 PM



A1 FIRST FLOOR PLAN - TELECOMMUNICATIONS - AREA B
1/8" = 1'-0"



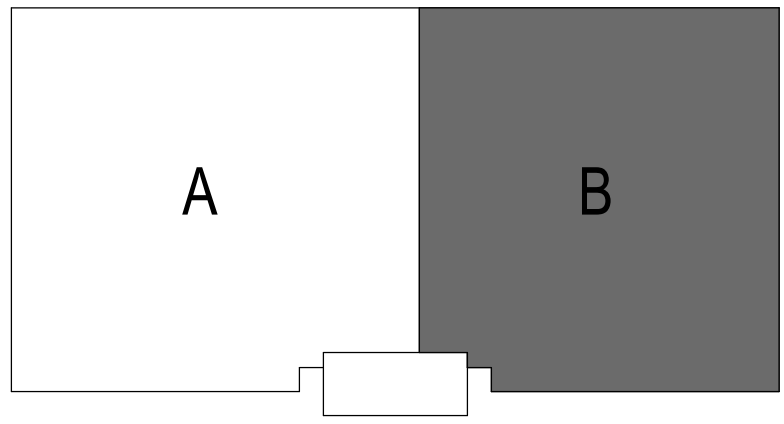
GENERAL NOTES

1. PROVIDE SEPARATION DISTANCE OF 6" BETWEEN SIPRNET AND NIPRNET DEVICE OUTSIDE EDGE OF 5'x5' BOX.
2. PROVIDE MINIMUM SEPARATION DISTANCE OF 6" BETWEEN SIPRNET AND NIPRNET CABLE PATHWAYS AND TERMINATIONS.
3. IN INDIVIDUAL OFFICES, MOUNT TV OUTLETS AT 66" AFF. IN OPEN OFFICES MOUNT TV OUTLETS AT 72" AFF. LOCATE TV OUTLET ADJACENT TO THEIR RESPECTIVE POWER RECEPTACLE.
4. FLOOR BOX TO BE LIMITED TO SERVING A MAXIMUM OF 6 WORK AREAS (ALL PART OF ONE FURNITURE CLUSTER). PROVIDE EACH DESK AREA WITH TWO NIPR AND TWO SIPR DATA OUTLETS.
5. MOUNT DATA OUTLETS ADJACENT TO POWER OUTLETS, WITH A SEPARATION DISTANCE OF 6" BETWEEN THE EDGE OF DATA AND POWER FACEPLATES.
6. IN CONFERENCE ROOMS, FLOOR BOXES TO BE ALIGNED NEAR EDGE OF TABLES AND WITH TABLE LEGS FOR CABLE MANAGEMENT OF POWER, DATA, AND A/V DEVICES.
7. ENSURE PROPER PATHWAY SEPARATIONS PER TIA-569 CNSSAM TEMPEST REQUIREMENTS.

TELECOMMUNICATIONS KEYNOTES

1. CEILING MOUNTED OUTLET. MOUNT 3-6 INCHES ABOVE THE CEILING.
2. SURFACE MOUNT ALL TELECOMMUNICATIONS DEVICES WITHIN THIS ROOM.
3. OUTLETS TO BE LOCATED IN THE FIRE ALARM CONTROL PANEL. COORDINATE DURING INSTALLATION.
4. OUTLETS TO BE LOCATED IN THE BAS PANEL. COORDINATE DURING INSTALLATION.
5. CAT6 CABLE ROUTING SHOWN TO AND FROM FLOOR BOXES WITHIN THIS ROOM ARE DIAGRAMMATIC. COORDINATE ACTUALLY ROUTING OF CAT6 CABLE WITHIN FLOOR CABLE PATHWAY SYSTEM IN THE FIELD. REFER TO "WALL TO ACCESS FLOORING TRANSITION" DETAIL FOR ADDITIONAL REQUIREMENTS.

KEY PLAN



PLAN NORTH



APPROVED

FOR COMMANDER NAVFAC

ACTIVITY

Approved by Emily Sylvester, Director of Installation Development Division

SATISFACTORY TO DATE 06/19/2020

DES EC DRW DJF CHK JAZ

PMID SGL/RMS

BRANCH MANAGER JAS

CHIEF ENGINEER EJA

FIRE PROTECTION

NAVAL FACILITIES ENGINEERING COMMAND

NAVAL FACILITIES ENGINEERING COMMAND ~ MID-ATLANTIC

CAMP LEJUNE - JACKSONVILLE, NC

MARSOC

JACKSONVILLE NORTH CAROLINA

P1395 MARINE RAIDER HEADQUARTERS

FIRST FLOOR PLAN - TELECOMMUNICATIONS - AREA B

SCALE: AS NOTED

PROJECT NO.: 1603164

CONSTR. CONTR. NO.

NAVFAC DRAWING NO. 12794421

SHEET 202 OF 228

ET102

DRAWING REVISION: 17 APRIL 2018

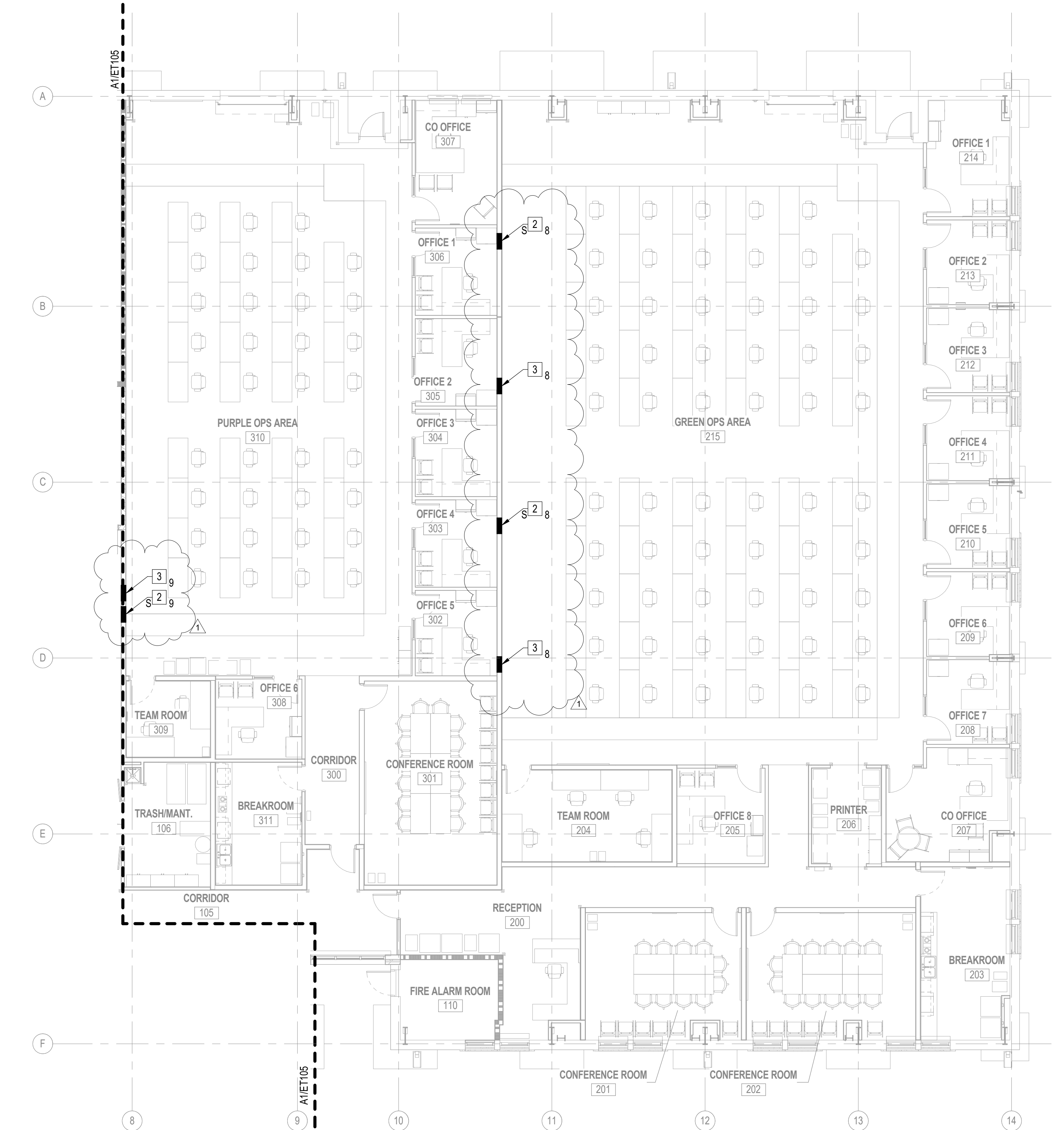


KEY PLAN

- # NETWORK KEYNOTES
- 1 ACCESS PATHWAY FROM CEILING TO BELOW FLOOR CONCEALED IN WALL.
 - 2 HATCHING PROVIDES SUGGESTED LOCATION FOR GROUPING OF SECURE 1-1/4" CONDUITS FOR CABLE ROUTING. NUMERICAL SUBSCRIPT NEAR NETWORK KEYNOTE INDICATES ESTIMATED QUANTITY OF 1-1/4" CONDUITS REQUIRED FOR PATHWAY ACCESS WITHIN WALL CAVITY. NOTE QUANTITY OF CONDUITS ARE BASED ON A MAXIMUM OF NINE CAT6 CABLES (WITH AN OUTER DIAMETER OF 0.265) PER CONDUIT, AND 40% CONDUIT FILL. REFER TO "WALL TO ACCESS FLOORING TRANSITION" DETAIL FOR ADDITIONAL REQUIREMENTS.
 - 3 HATCHING PROVIDES SUGGESTED LOCATION FOR GROUPING OF NON-SECURE 1-1/4" CONDUITS FOR CABLE ROUTING. NUMERICAL SUBSCRIPT NEAR NETWORK KEYNOTE INDICATES ESTIMATED QUANTITY OF 1-1/4" CONDUITS REQUIRED FOR PATHWAY ACCESS WITHIN WALL CAVITY. NOTE QUANTITY OF CONDUITS ARE BASED ON A MAXIMUM OF NINE CAT6 CABLES (WITH AN OUTER DIAMETER OF 0.265) PER CONDUIT, AND 40% CONDUIT FILL. REFER TO "WALL TO ACCESS FLOORING TRANSITION" DETAIL FOR ADDITIONAL REQUIREMENTS.

[illegible]

C:\w\2016\10132861-E-CENTRAL_P-395 MARINE HQ_Jeremy.Donest.v1
08/2/2016 14:21:15 PM



A1 FIRST FLOOR PLAN - NETWORK BELOW FLOOR ROUTING - AREA B
1/8" = 1'-0"

0 4' 8' 16'

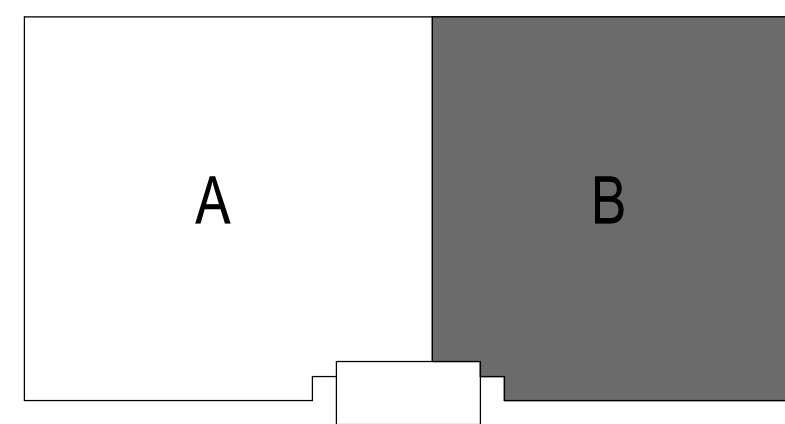
GENERAL NOTES

1. PROVIDE A MINIMUM SEPARATION OF 12" BETWEEN THE NIPR AND SIPR CABLE TRAYS.
2. BOND CABLE TRAY TO GROUNDING INFRASTRUCTURE. REFER TO THE RISER DIAGRAMS ON THE ET600 SERIES SHEETS FOR ADDITIONAL INFORMATION.
3. RUN GROUND WIRE WITH THE CABLE TRAY AND BOND GROUND WIRE TO EACH SECTION OF THE CABLE TRAY. BOND GROUND WIRE TO THE RAISED GROUND FLOOR.
4. ROUTE SIPRNET AND NIPRNET PATHWAYS FROM OPPOSITE DIRECTIONS, CROSSING AT 90 DEGREES BUT **NEVER** TOUCHING.
5. FOR UNDERFLOOR PATHWAY SYSTEM, COORDINATE FLOOR PENETRATIONS AND FLOOR PEDESTAL LOCATIONS WITH OTHER CONTRACTORS AND MODULAR FURNITURE LAYOUT. PROVIDE ALL FLEXIBLE CONDUIT BOXES AND MATERIALS AS NECESSARY FOR CONNECTIONS.
6. REFER TO SHEET ET102 FOR LOCATION AND QUANTITY OF DATA DEVICES AND DATA BOXES.
7. PROVIDE A MINIMUM OF 2" OF FREE SPACE BETWEEN THE TOP OF THE CABLE TRAY SIDE RAILS AND THE UNDERSIDE OF THE STRINGERS.
8. BOND ALL METAL PARTS OF THE ACCESS FLOOR TO GROUND. FOLLOW THE ACCESS FLOOR MANUFACTURER'S GUIDELINES AND ALL APPLICABLE CODES.
9. ENSURE PROPER PATHWAY SEPARATIONS PER TIA-569 CNSSAM TEMPEST REQUIREMENTS.
10. PROVIDE MINIMUM SEPARATION DISTANCE OF 6" BETWEEN SIPRNET AND NIPRNET CABLE PATHWAYS AND TERMINATIONS.

NETWORK KEYNOTES

1. ACCESS PATHWAY FROM CEILING TO BELOW FLOOR CONCEALED IN WALL.
2. HATCHING PROVIDES SUGGESTED LOCATION FOR GROUPING OF SECURE 1-1/4" CONDUITS FOR CABLE ROUTING. NUMERICAL SUBSCRIPT NEAR NETWORK KEYNOTE INDICATES ESTIMATED QUANTITY OF 1-1/4" CONDUITS REQUIRED FOR PATHWAY ACCESS WITHIN CAVITY. NOTE THE QUANTITY OF CONDUITS IS BASED ON A MAXIMUM OF NINE CAT6 CABLES, (WITH AN OUTER DIAMETER OF 0.265), AND 40% CONDUIT FILL. REFER TO "WALL TO ACCESS FLOORING TRANSITION" DETAIL FOR ADDITIONAL REQUIREMENTS.
3. HATCHING PROVIDES SUGGESTED LOCATION FOR GROUPING OF NON-SECURE 1-1/4" CONDUITS FOR CABLE ROUTING. NUMERICAL SUBSCRIPT NEAR NETWORK KEYNOTE INDICATES ESTIMATED QUANTITY OF 1-1/4" CONDUITS REQUIRED FOR PATHWAY ACCESS WITHIN WALL CAVITY. NOTE THE QUANTITY OF CONDUITS IS BASED ON A MAXIMUM OF NINE CAT6 CABLES, (WITH AN OUTER DIAMETER PF 0.265), AND 40% CONDUIT FILL. REFER TO "WALL TO ACCESS FLOORING TRANSITION" DETAIL FOR ADDITIONAL REQUIREMENTS.

KEY PLAN



DATE	08/05/2020	APPR
REVISION 1	DESCRIPTION	SYM
1		

440 S. CHURCH STREET, SUITE 1000
CHARLOTTE, NC 28202
TEL (704)338-6700

APPROVED

FOR COMMANDER NAVFAC
ACTIVITY

Approved by Emily Sylvester, Director of
Installation Development Division

SATISFACTORY TO DATE 06/19/2020

DES	EC	DRW	DJF	CHK	JAZ
-----	----	-----	-----	-----	-----

PMOM SGL/RMS

BRANCH MANAGER JAS

CHIEF ENGINEER EJA

FIRE PROTECTION

NAVAL FACILITIES ENGINEERING COMMAND
NAVAL FACILITIES ENGINEERING COMMAND ~ MID-ATLANTIC
CAMP LEJEUNE - JACKSONVILLE, NC
MIDLAND CI CORE
MARSOC
P1395 MARINE RAIDER HEADQUARTERS
JACKSONVILLE, NORTH CAROLINA

DEPARTMENT OF THE NAVY
NAVFAC DRAWING NO. 12794425
SHEET 206 OF 228

ET106

DRAWING REVISION: 17 APRIL 2018

FIRST FLOOR PLAN - NETWORK BELOW FLOOR ROUTING - AREA B

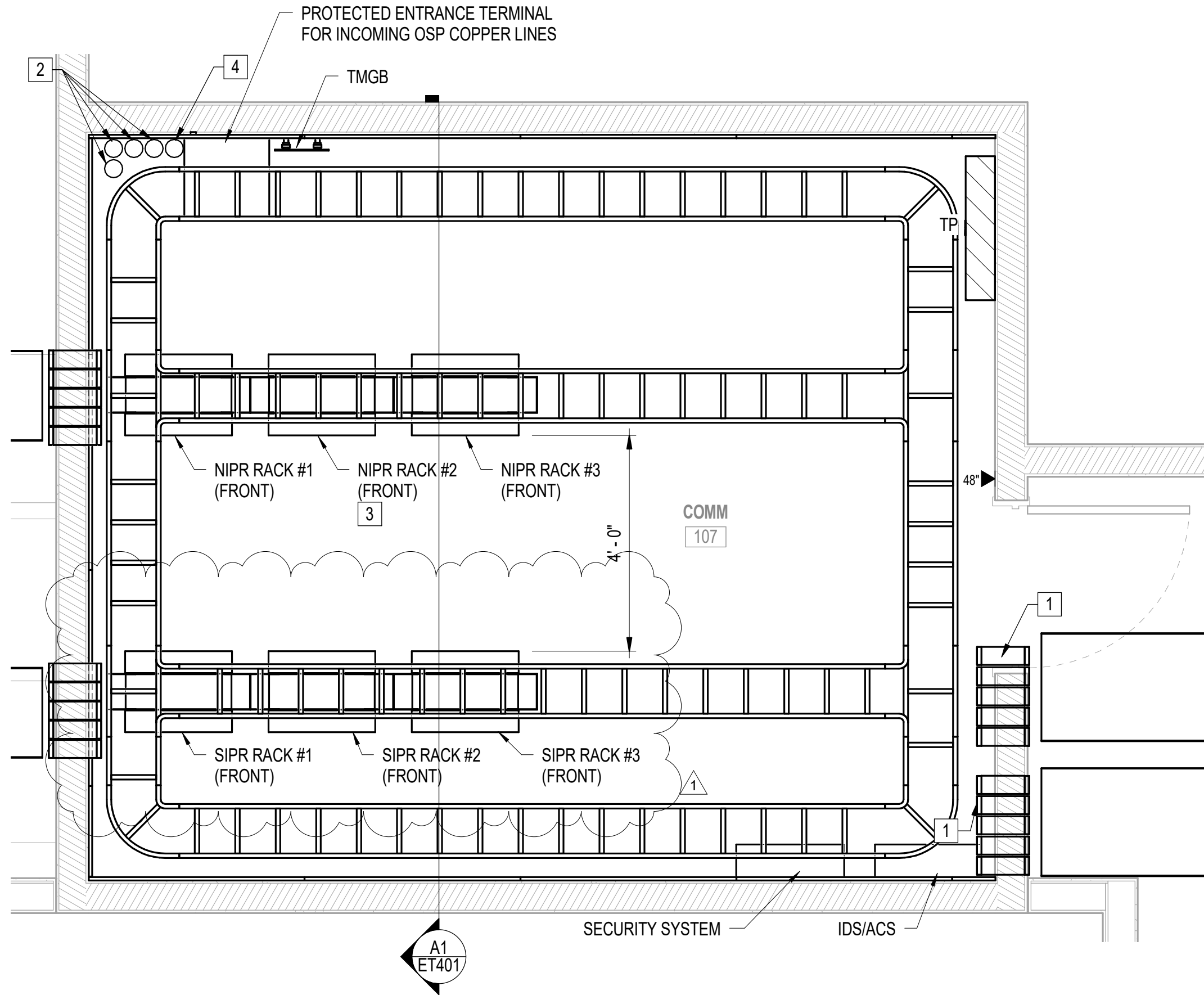
C:\w\5018\1013881\1-E-CENTRAL_P-1395 MARINE HQ_jeremy.forest.v1
08/23/20 14:25:51 PM

D

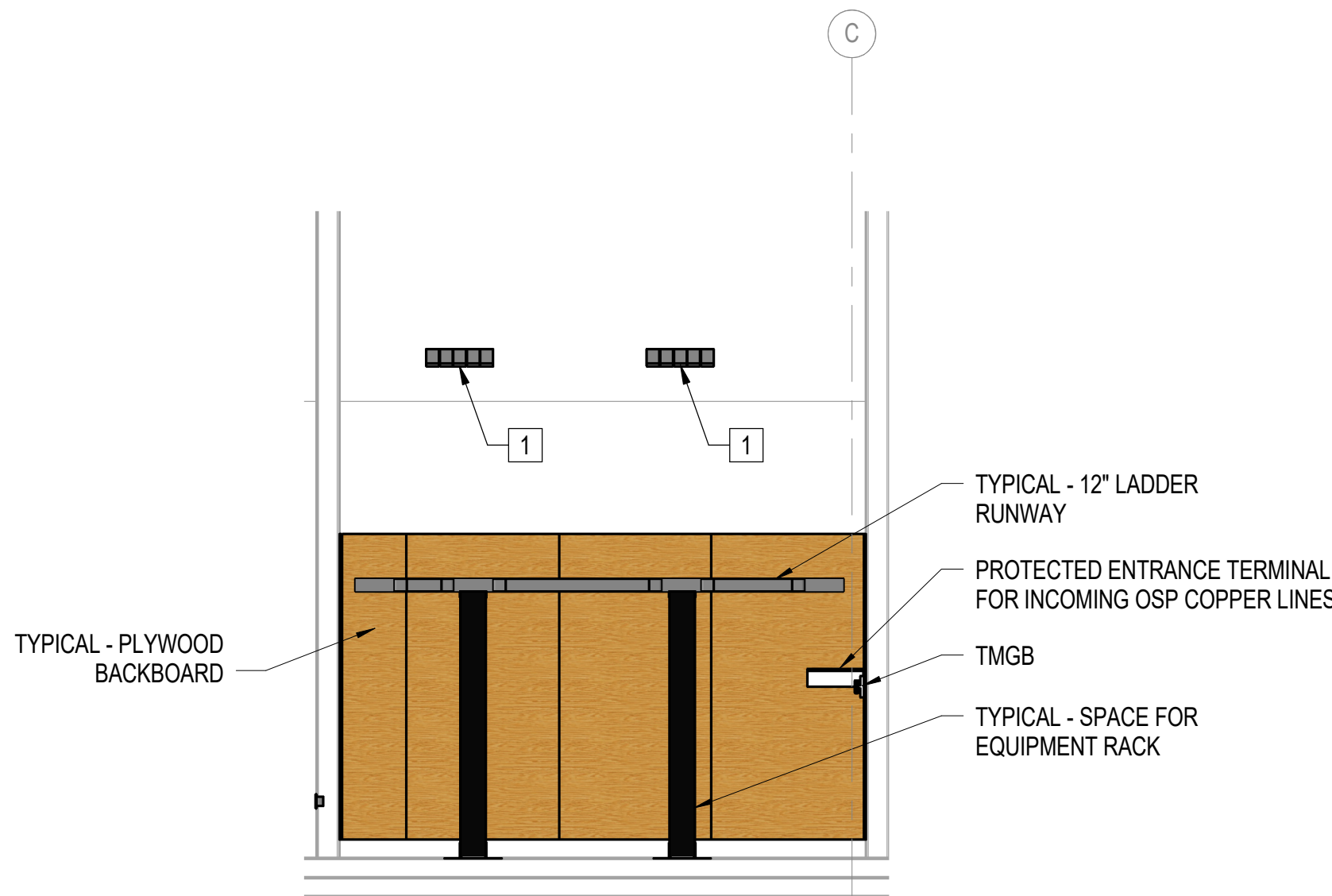
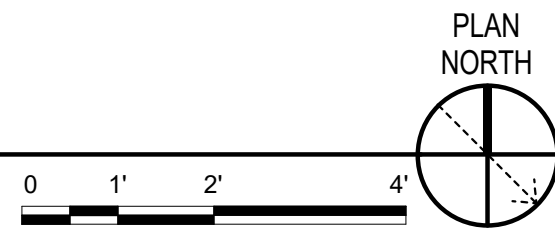
C

B

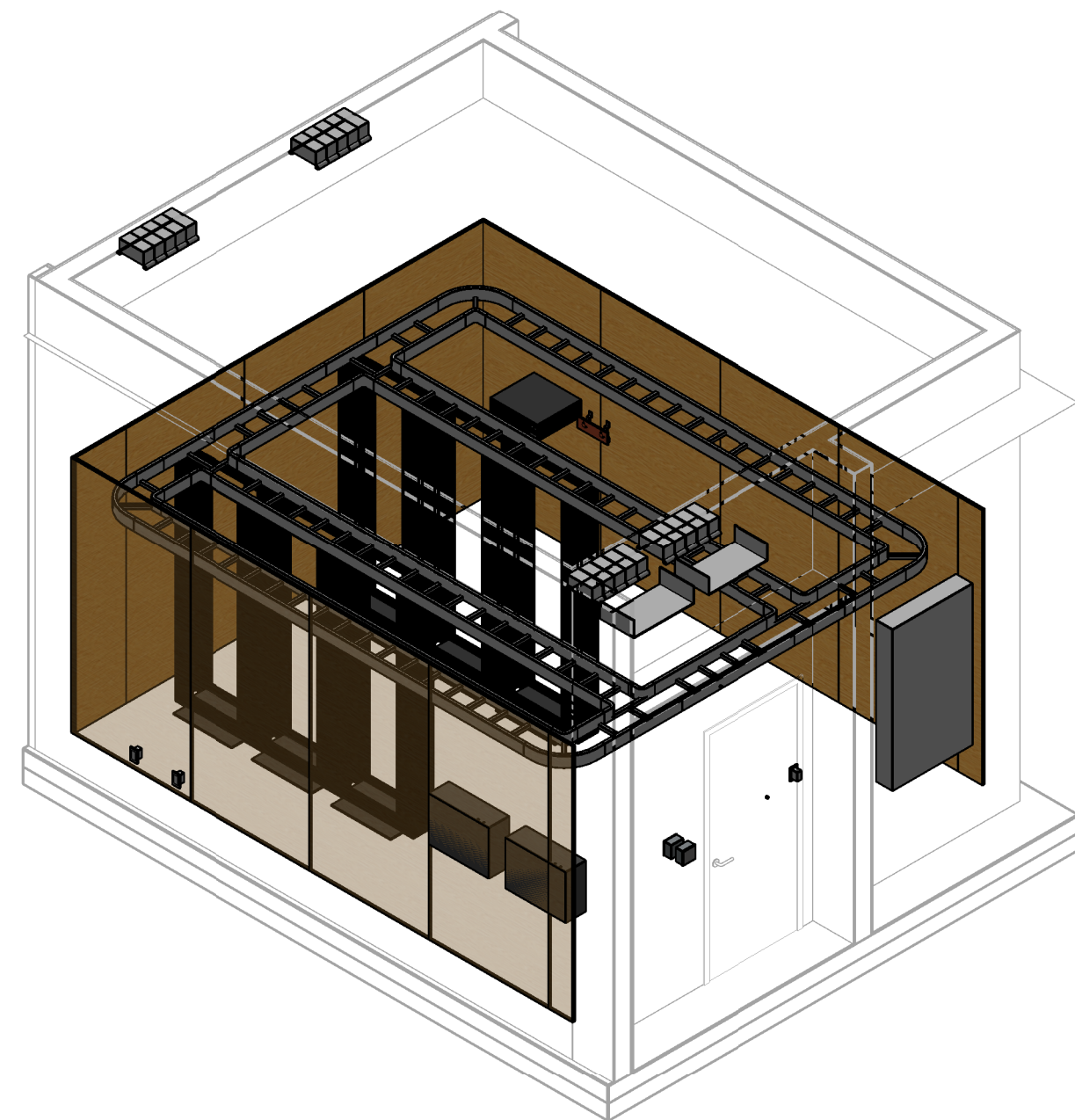
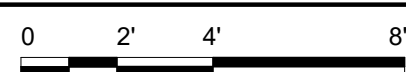
A



C2 COMM ROOM 107 - ENLARGED PLAN
1/2" = 1'-0" (ET101)



A1 COMM ROOM 107 SECTION - PLAN WEST
1/4" = 1'-0" (ET401)



A2 COMM ROOM 107 - ISOMETERIC
NTS

GENERAL NOTES

1. MAINTAIN A MINIMUM OF 12" OF SEPARATION BETWEEN SIPR EQUIPMENT AND NIPR WIRELINES THAT DIRECTLY LEAVE COMM ROOM 107.
2. MAINTAIN A MINIMUM OF 6" OF SEPARATION BETWEEN SIPR CABLES AND NIPR CABLES THAT DIRECTLY LEAVE COMM ROOM 107.
3. PRIOR TO ROUGH-IN, COORDINATE MOUNTING HEIGHT AND LOCATION OF ELECTRICAL DEVICES ONSITE TO AVOID POTENTIAL CONFLICTS WITH TELECOM PASSIVE INFRASTRUCTURE.

NETWORK KEYNOTES

1. HIGH VOLUME CABLE PATHWAYS WITH INTEGRAL FIRESTOPPING AND SOUND ATTENUATION. BASIS OF DESIGN SHALL BE THE STI EZ PATH SERIES 44+.
2. FOUR 4" CONDUITS ROUTED BELOW GRADE TO EXISTING UTILITY MANHOLE AT EVERETTE CREEK RD. SEE SHEETS ES101 AND ET601 FOR ADDITIONAL INFORMATION. FIELD COORDINATE LOCATIONS OF CONDUITS PRIOR TO INSTALLATION.
3. LOCATION OF KRONE BLOCKS.
4. 4" CONDUIT ROUTED UNDERGROUND TO ANTENNA PAD. FIELD COORDINATE LOCATIONS OF CONDUITS PRIOR TO INSTALLATION.



APPROVED	
FOR COMMANDER NAVFAC	
ACTIVITY	
Approved by Emily Sylvester, Director of Installation Development Division	
SATISFACTORY TO DATE 06/19/2020	
DES	EC
DRW	DJF
CHK	JAZ
PM/DM SGL/RMS	
BRANCH MANAGER JAS	
CHIEF ENGINEER EJA	
FIRE PROTECTION	

DEPARTMENT OF THE NAVY NAVAL FACILITIES ENGINEERING COMMAND MIDLANT CI CORE	NAVAL FACILITIES ENGINEERING COMMAND
	MID-ATLANTIC
	CAMP LEJUNE - JACKSONVILLE, NC
	JACKSONVILLE, NORTH CAROLINA
P1395 MARINE RAIDER HEADQUARTERS	
MARSOC	
ENLARGED PLANS	

SCALE: AS NOTED	
EPROJCT NO.: 1603164	
CONSTR. CONTR. NO.	
NAVFAC DRAWING NO. 12794426	
SHEET 207	OF 228
ET401	
DRAWING REVISION: 17 APRIL 2018	

UNCLASSIFIED

C:\w\501\B1\13981\1-E-CENTRAL_P-395 MARINE HQ_jeremy.forest.v1
3/2/2020 14:25:35 PM

D

C

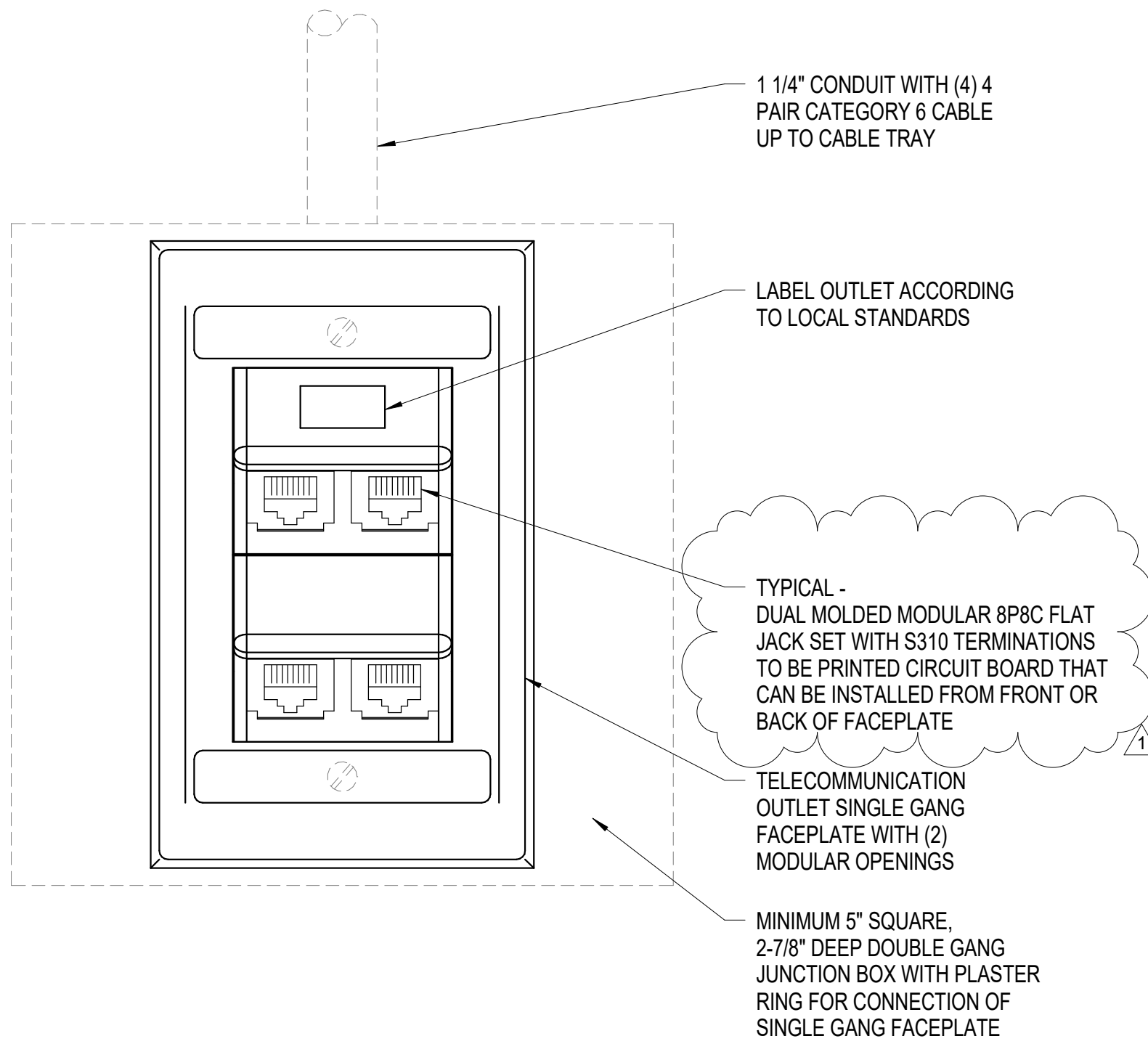
B

A

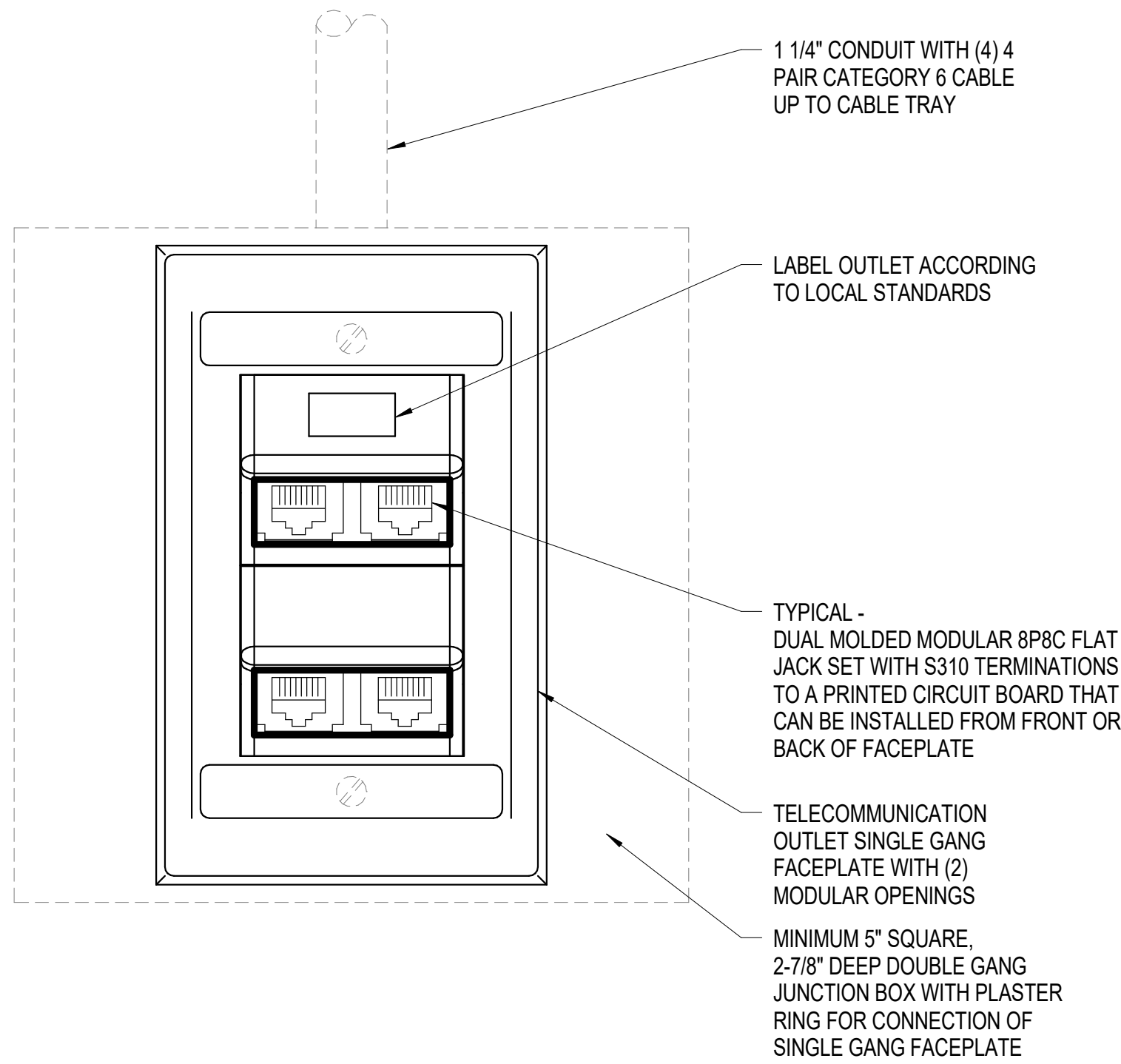
UNCLASSIFIED

UNCLASSIFIED

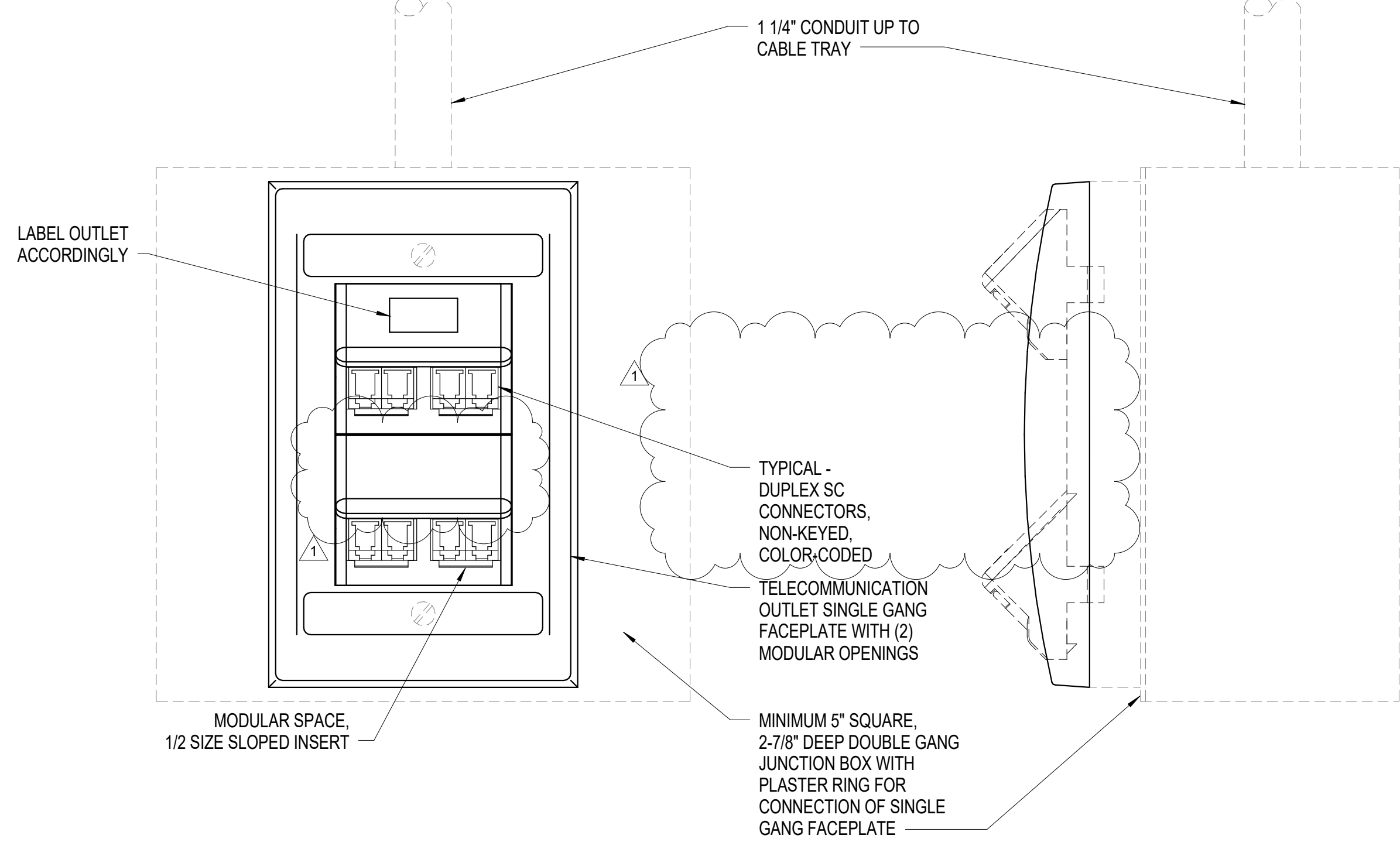
UNCLASSIFIED



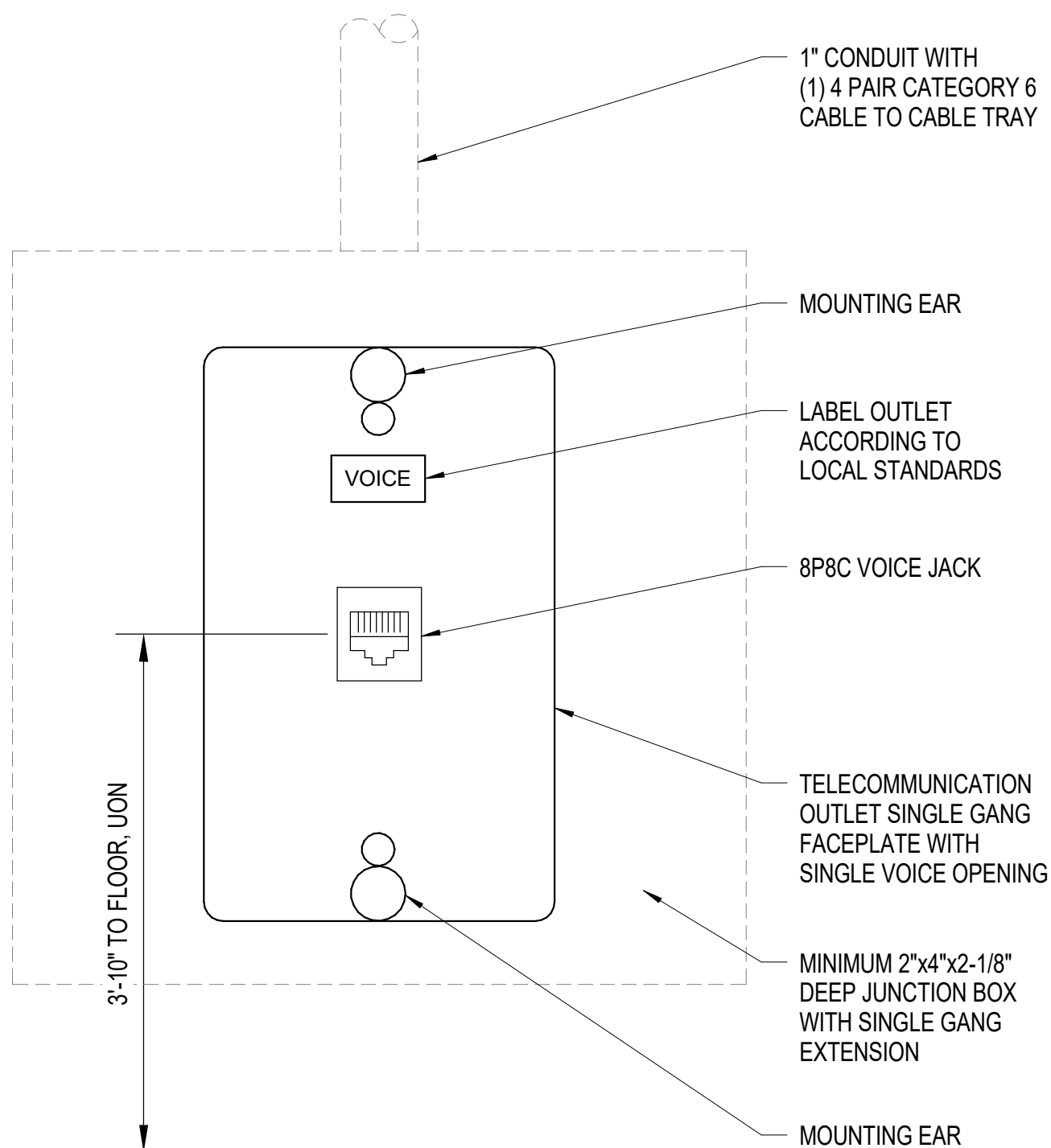
C1 SECURE OUTLET DETAIL (S)
NTS



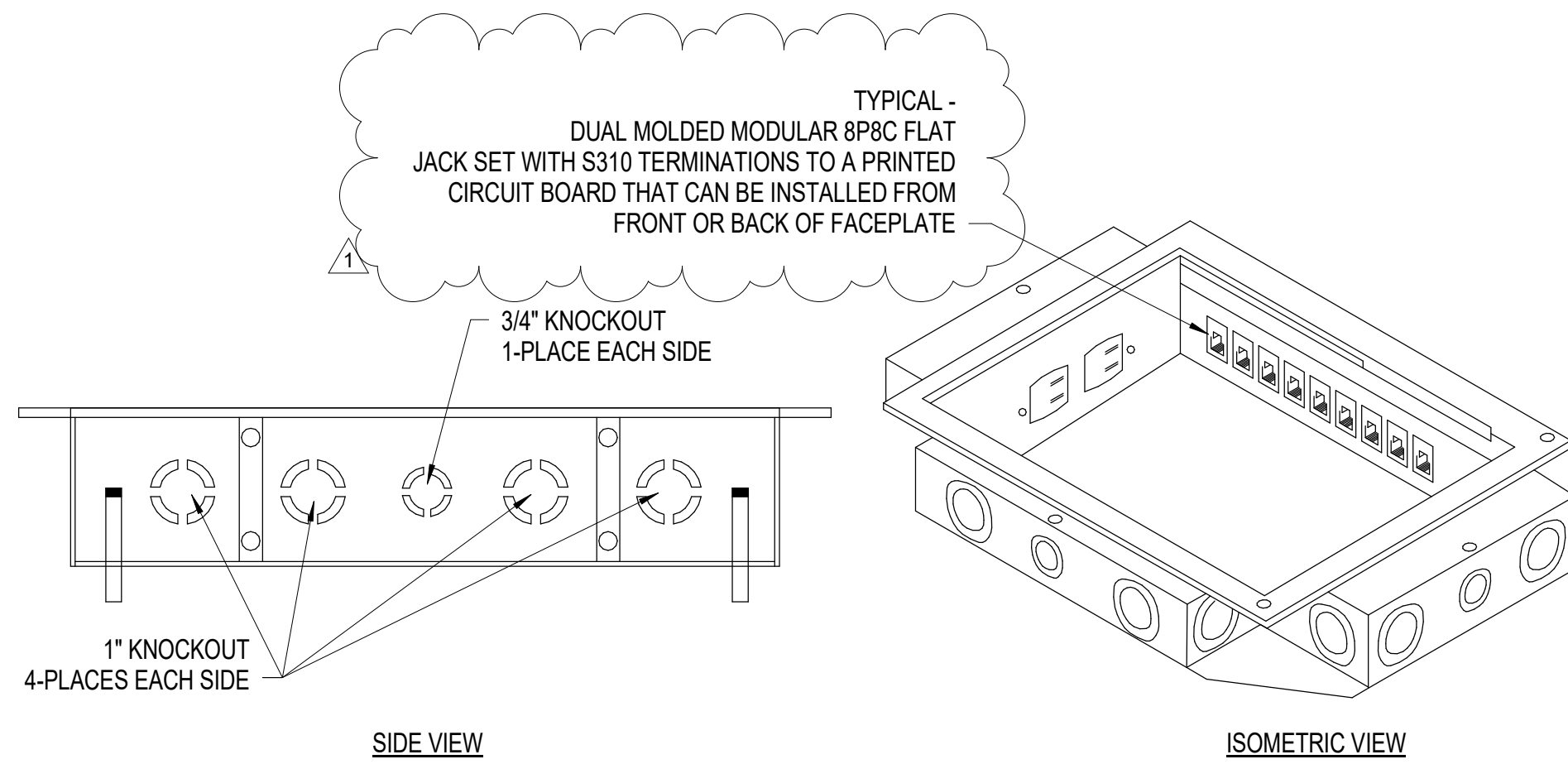
C2 NON-SECURE OUTLET DETAIL
NTS



C3 SECURE DATA OUTLET DETAIL (FO)
NTS



A1 SINGLE VOICE (POTS) OUTLET DETAIL
NTS



A2 FLOOR OUTLET - STANDARD TELE/DATA DETAIL
NTS

FLOOR OUTLET NOTES:

- BACKBOX TO BE RATED FOR FLOOR CONSTRUCTION (WOOD, CONCRETE, RAISED FLOOR, ETC.) OF LOCATION WHERE INSTALLED.
- FOR BACKBOX LOCATED IN ACCESS FLOORING SYSTEM, COORDINATE BACKBOX AND FACEPLATE WITH ACCESS FLOORING SYSTEM PRIOR TO INSTALLATION.

NETWORK COLOR MATRIX		
NETWORK	COLOR JACKET COLOR	NOTES
NIPRNET	GREEN	-
SIPRNET	RED	-
VOICE	GREEN	FOR TELEPHONE NOT ROUTED THROUGH THE VOIP DATA SWITCH.



APPROVED

FOR COMMANDER NAVFAC

ACTIVITY

Approved by Emily Sylvester, Director of
Installation Development Division

SATISFACTORY TO DATE 06/19/2020

DES EC DRW DJF CHK JAZ

PMIDM SGL/RMS

BRANCH MANAGER JAS

CHIEF ENGINEER EJA

FIRE PROTECTION

NAVAL FACILITIES ENGINEERING COMMAND

NAVAL FACILITIES ENGINEERING COMMAND ~ MID-ATLANTIC

CAMP LEJUNE - JACKSONVILLE, NC

MARSOC

P1395 MARINE RAIDER HEADQUARTERS

JACKSONVILLE, NORTH CAROLINA

TELECOMMUNICATIONS DETAILS

SCALE: AS NOTED

PROJECT NO.: 1603164

CONSTR. CONTR. NO.

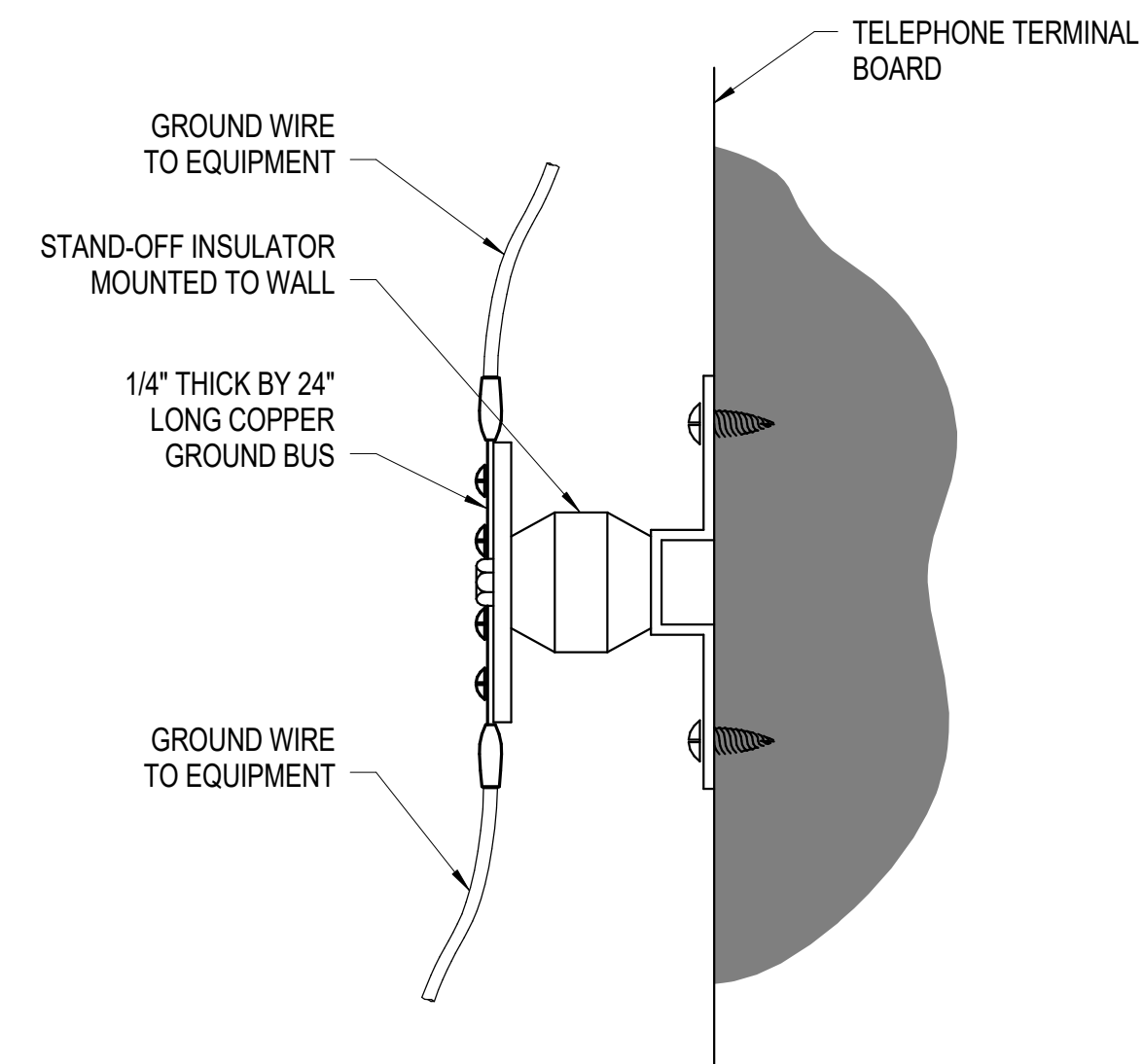
NAVFAC DRAWING NO.

12794427

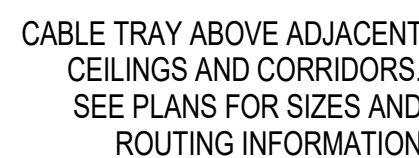
SHEET 208 OF 228

ET501

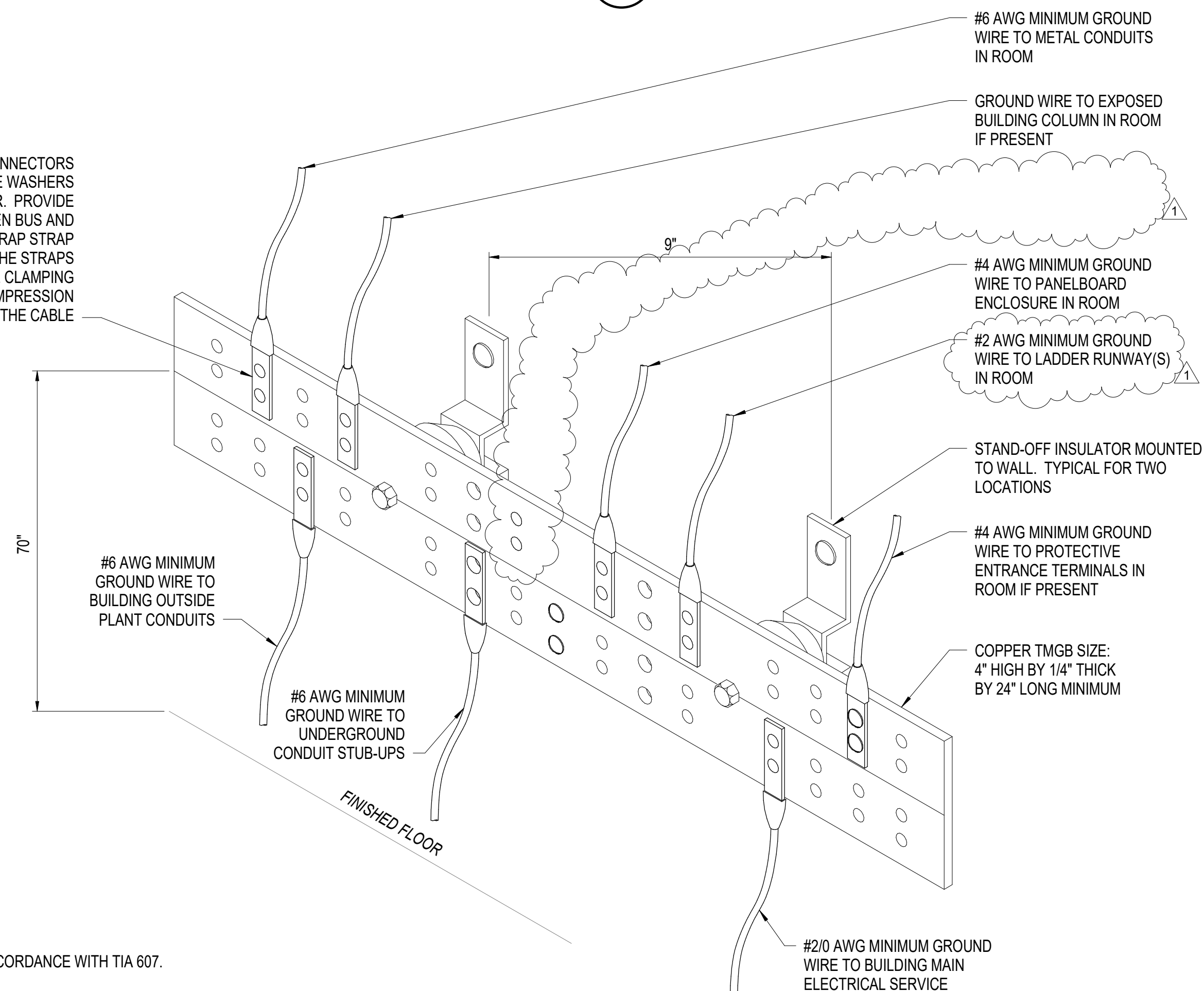
DRAWING REVISION: 17 APRIL 2018



NTS



(A1)



(A3

[illegible]



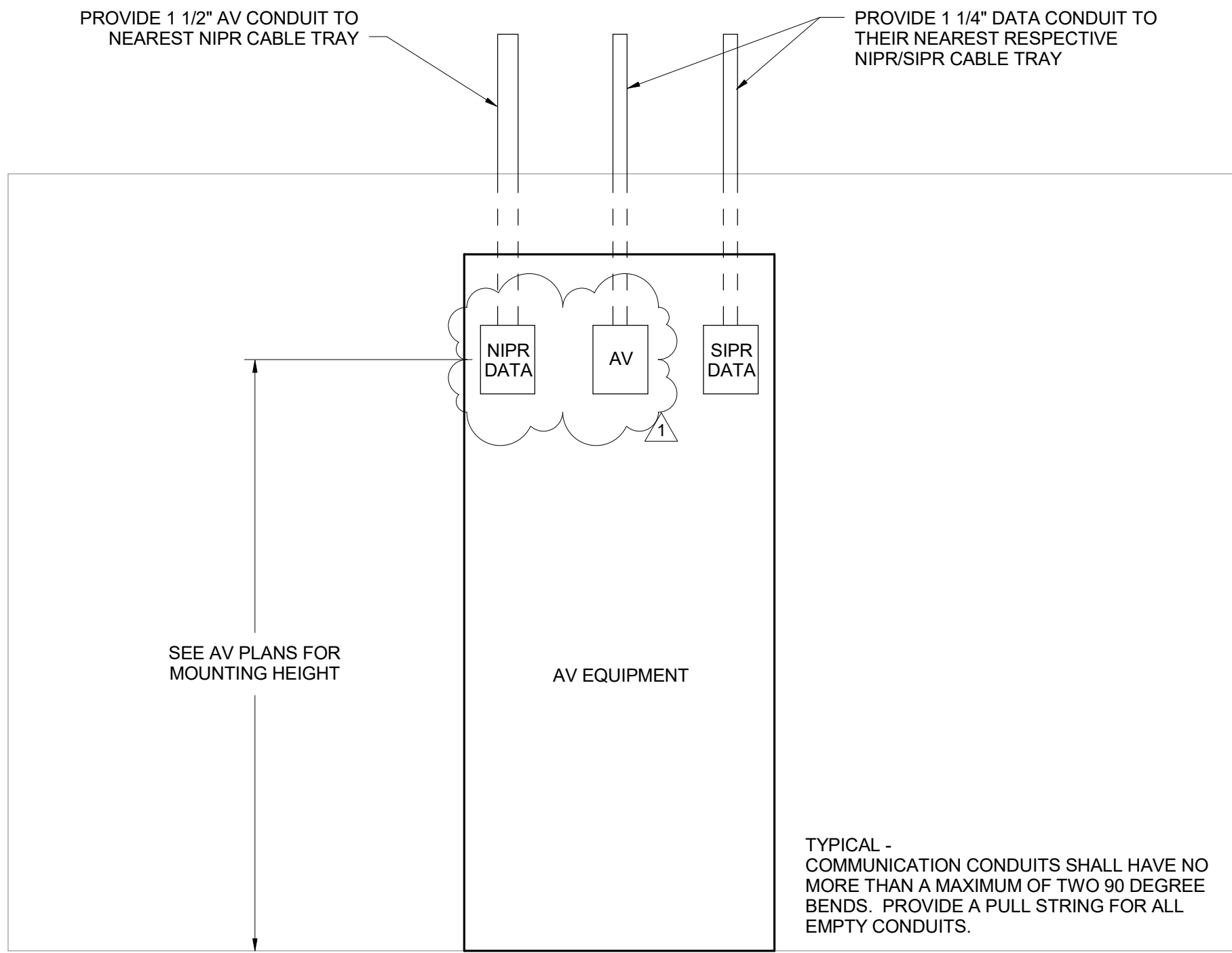
C:\w\2016\10\13881\1-E-CENTRAL_P-1395 MARINE HQ_jeremy forest.v1
08/23/20 14:25 PM

D

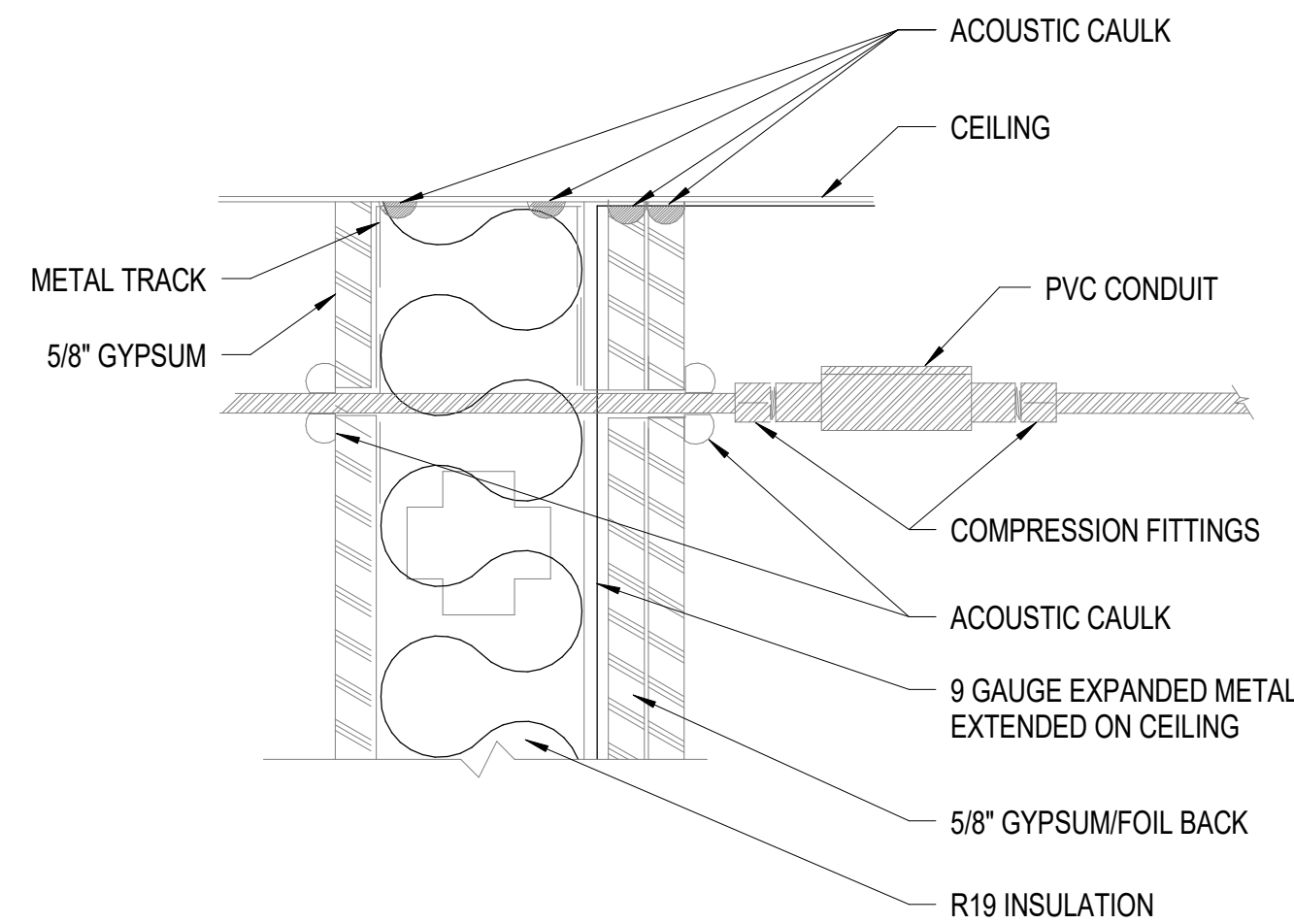
C

B

A



C1 J-BOXES DETAIL FOR AV EQUIPMENT
NTS

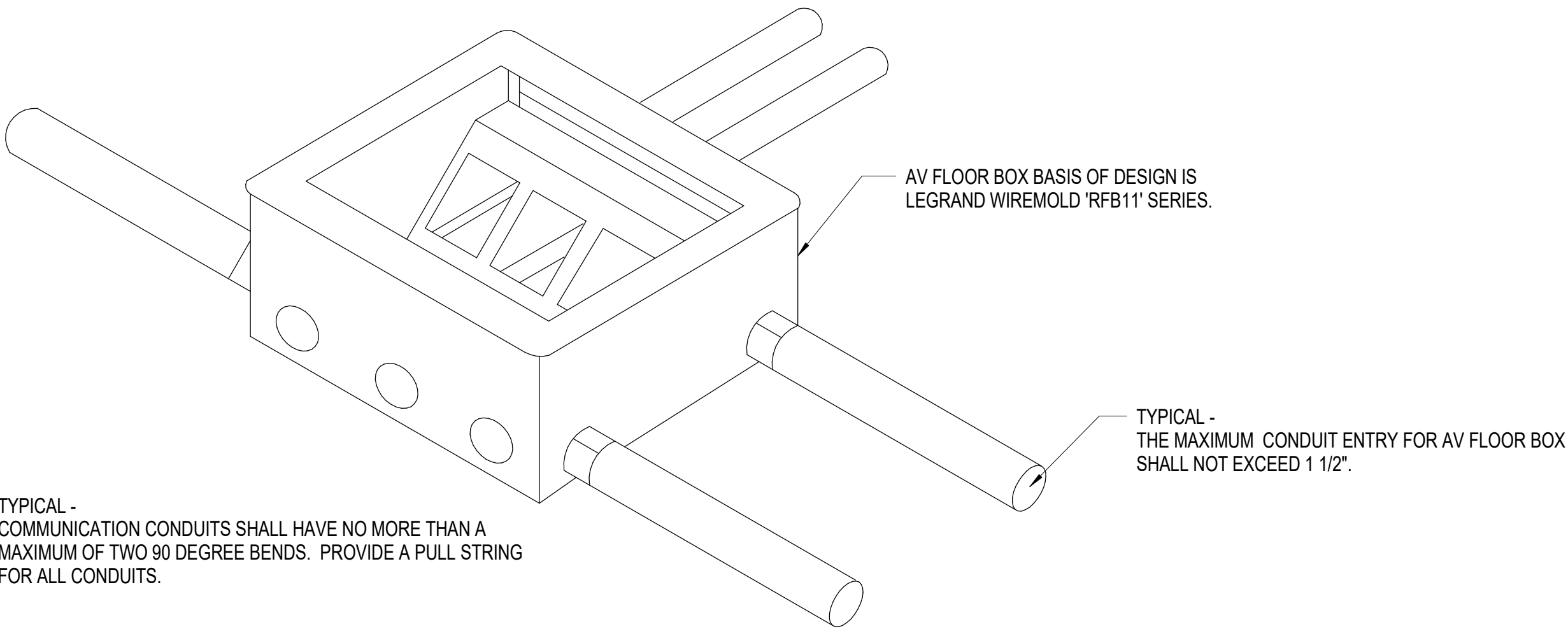


A1 CONDUIT PENETRATION DIELECTRIC BREAK DETAIL
NTS

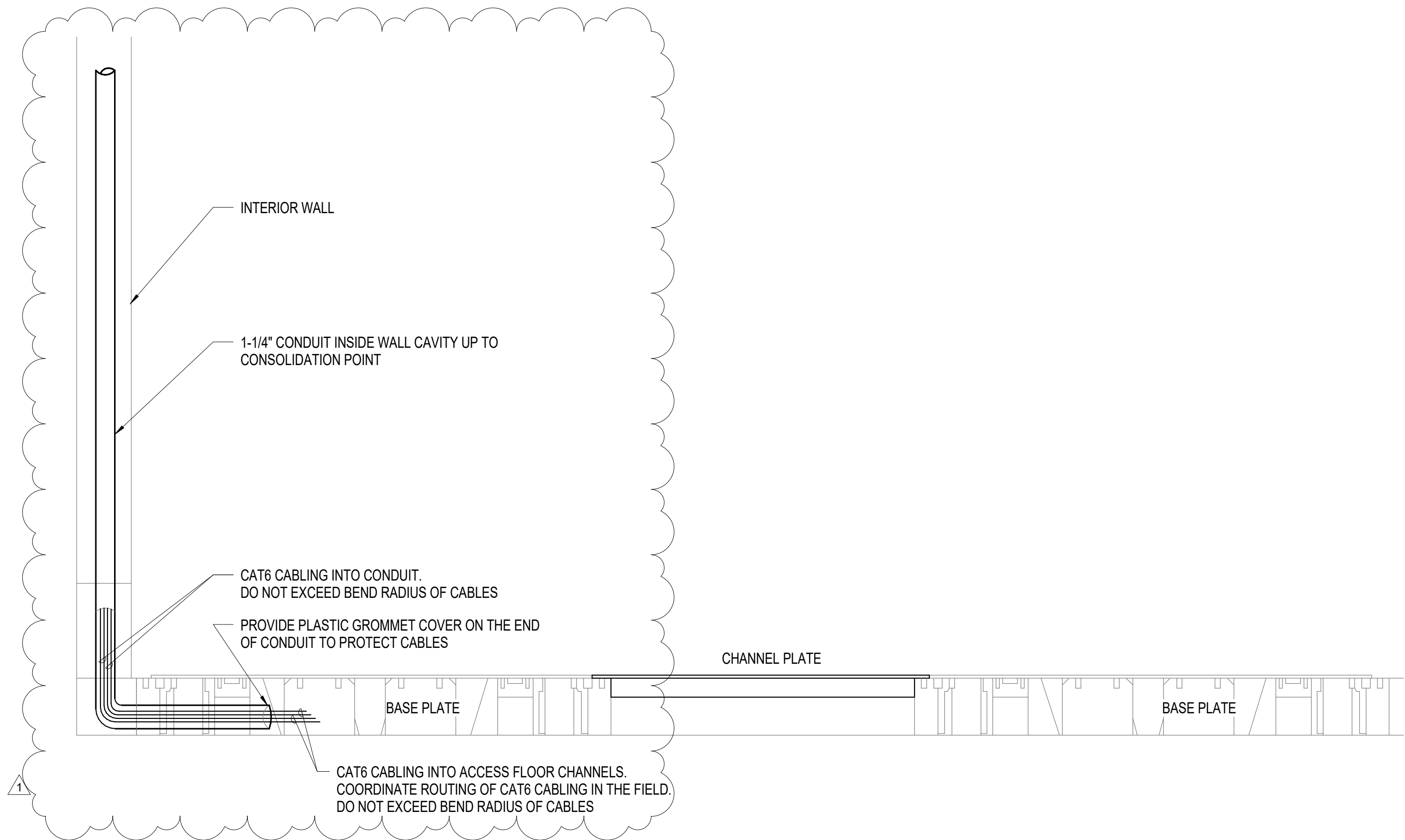
UNCLASSIFIED

3

TYPICAL - COMMUNICATION CONDUITS SHALL HAVE NO MORE THAN A MAXIMUM OF TWO 90 DEGREE BENDS. PROVIDE A PULL STRING FOR ALL CONDUITS.



C3 AV FLOOR BOX DETAIL
NTS



A3 WALL TO ACCESS FLOORING TRANSITION DETAIL
NTS

UNCLASSIFIED

4

4

5

5



APPROVED

FOR COMMANDER NAVFAC

ACTIVITY

Approved by Emily Sylvester, Director of
Installation Development Division

SATISFACTORY TO DATE 06/19/2020

DES EC DRW DJF CHK JAZ

PMIDM SGL/RMS

BRANCH MANAGER JAS

CHIEF ENGINEER EJA

FIRE PROTECTION

DEPARTMENT OF THE NAVY
NAVAL FACILITIES ENGINEERING COMMAND ~ MID-ATLANTIC
MIDLANT CI CORE
NAVAL FACILITIES ENGINEERING COMMAND ~ MID-ATLANTIC
CAMP LEJEUNE - JACKSONVILLE, NC
JACKSONVILLE, NORTH CAROLINA
P1395 MARINE RAIDER HEADQUARTERS
MARSOC
TELECOMMUNICATIONS DETAILS

SCALE: AS NOTED

PROJECT NO.: 1603164

CONSTR. CONTR. NO.

NAVFAC DRAWING NO. 12794430

SHEET 211 OF 228

ET504

DRAWING REVISION: 17 APRIL 2018

UNCLASSIFIED

A



NTS



NTS

- 1 PROVIDE ONE SET OF 48 STRAND SINGLEMODE FIBER FROM EXISTING UTILITY CONNECTION POINT. ROUTE IN ONE OF FOUR 4" CONDUIT FROM EXISTING COMMUNICATION UTILITY MANHOLE. FIBER TO BE TERMINATED IN OPTICAL FIBER DISTRIBUTION PANELS WITH CONNECTORS IN THE NON-SECURE EQUIPMENT RACKS. PROVIDE 30' OF SLACK COIL WITHIN COMM ROOM.
- 2 PROVIDE WATERFALL FITTING(S) AS REQUIRED.
- 3 PROVIDE (4) 4 PAIR CATEGORY 6 UNSHIELDED COPPER DROPS. PROVIDE (1) 4 PAIR CAT6 CABLE TO EACH 8P8C JACK. CABLES SHALL BE CONTINUOUS FROM PATCH PANEL TO JACK WITHOUT SPLICING. REFER TO CABLE COLOR CLASSIFICATION TABLE FOR APPLICABLE COLOR.
- 4 NON-SECURE WALL-MOUNTED DATA JACK. SEE FLOOR PLAN FOR QUANTITY AND LOCATION.
- 5 NON-SECURE FLOOR-MOUNTED DATA JACK. SEE FLOOR PLAN FOR QUANTITY AND LOCATION.
- 6 PROVIDE 100 PAIR OF OSP COPPER CABLES FROM EXISTING UTILITY CONNECTION POINT. ROUTE IN ONE OF THE FOUR 4" CONDUITS. TERMINATE ONE PER PORT AFTER ROUTING THROUGH PET AND RACK MOUNTED KRONE BLOCKS. SEE KEYNOTES 16 AND 17 FOR ADDITIONAL INFORMATION.
- 7 HIGH VOLUME CABLE PATHWAYS.
- 8 NON-SECURE EQUIPMENT RACK SHOWN IS TYPICAL OF THREE RACKS. SEE COMM ROOM 107 ENLARGED DETAIL FOR ADDITIONAL INFORMATION.
- 9 CONDUITS SHALL BE GROUNDED WHERE THEY PENETRATE THE SECURE AREA PERIMETER.
- 10 CABLE TAG.
- 11 4" CONDUIT WITH 36 STRANDS OF SINGLE MODE FIBER AND 50 PAIRS OF OSP COPPER CABLES. ROUTE CONDUIT UNDERGROUND TO ANTENNA PAD. SEE SHEET ES101 FOR ADDITIONAL INFORMATION.
- 12 PROVIDE 12 STRAND SINGLEMODE FIBER BETWEEN THE NIPR AND SIPR COMMUNICATION RACKS.
- 13 ACCESS PATHWAY FROM ABOVE CEILING TO BELOW FLOOR CONCEALED IN WALL.
- 14 TWO OR FOUR GANG FLOOR BOX WITH EIGHT OR TWELVE PORTS FOR CABLE CONNECTION TO FURNITURE SYSTEM. PROVIDE (1) 4 PAIR CAT6 CABLE TO EACH 8P8C JACK. INSTALL NEAR FURNITURE SYSTEM IN ACCESS FLOOR SPACE. SEE FLOOR PLANS FOR QUANTITY AND LOCATION.
- 15 UNDERFLOOR PATHWAY SYSTEM.
- 16 PROTECTED ENTRANCE TERMINAL (PET) WITH PROTECTION MODULES FOR INCOMING OSP COPPER LINES. MOUNT +54" AFF. PROVIDE 710 INPUT AND 66 OUTPUT INTERCONNECTING HARDWARES FOR CONNECTION TO 100 PAIR COPPER OUTSIDE PLANT (OSP) RATED CABLES. PROVIDE CAT3 RISER FROM PET RACK MOUNTED KRONE BLOCKS.
- 17 PROVIDE RACK MOUNTED KRONE BLOCKS WITHIN NIPR RACK #2 FOR TERMINATION OF COPPER LINES.
- 18 NON-SECURE VOICE (POTS) OUTLET. SEE FLOOR PLAN FOR QUANTITY AND LOCATION.
- 19 PROVIDE (1) 4 PAIR CATEGORY 6 UNSHIELDED COPPER DROP. CABLE SHALL BE CONTINUOUS FROM PATCH PANEL TO JACK WITHOUT SPLICING. REFER TO CABLE COLOR CLASSIFICATION TABLE FOR APPLICABLE COLOR.

[illegible]